

Intelligent Book Scanner User Manual



12.2.1. *Virus-free plants produced from callus and protoplasts*
In TMV Cooper (see Hildebrandt, 1977) showed that after a few subcultures tobacco callus can become virus-free, apparently, callus tissues can escape virus infection, using meristematic active cells appear especially favored were also virus-free by Chandra and Hildebrandt (1967) obtained virus-free callus and protoplasts which appeared to be virus-free. Hildebrandt (1977) showed that callus of Nicotiana glauca could be virus-free by heat treatment.

More et al. (1982) showed that protoplasts they regenerated virus-free tobacco. Anderson et al. (1982) showed that protoplasts they regenerated virus-free tobacco. Anderson et al. (1982) showed that protoplasts they regenerated virus-free tobacco. Anderson et al. (1982) showed that protoplasts they regenerated virus-free tobacco.

12.2.2. *Virus identification*
It cannot be visually determined that a plant is virus-free (free of the known viruses) since there are many latent virus infections. The routine virus-free plants must therefore be assayed which can be carried out at a laboratory (Hildebrandt et al., 1980; Reuther and Schreier, 1981; Meier and Schreier, 1981).

The plants. The sap from one of the plants to be assayed is obtained with the leaf of a test plant, which has already been treated with a known virus. The sap from the test plant is then assayed after a few days in a laboratory. The sap from the test plant is then assayed after a few days in a laboratory. The sap from the test plant is then assayed after a few days in a laboratory.

12.2.3. *Cloning of meristems on virus-free (seedling) rootstocks (micrografting)*
It is not possible to include a meristem to grow, or a shoot obtained from meristem culture will not form roots, then it is possible to graft the meristem onto a virus-free (seedling) rootstock, which is grown or propagated in vitro. Agra-grafting is extremely important with woody species with this grafting method is often impossible. The conventional micrografting has been used since the work of Morel and Martin (1952) with tobacco. The first successful micrografting was carried out by Kishimoto et al. (1977) and Navarro et al. (1972) working with Citrus and the water grape (1981) and Navarro et al. (1972) working with Citrus and the water grape (1981). Later other plants were used such as Citrus (1979), apple (Huang and Allilain, 1978), Camellia (Dunstan et al., 1982) and Kariba (1980) have given an appraisal of the use of micrografting in fruit crops. For an extensive analysis of the (phyto)meristem which arise during in vitro micrografting, the reader is referred to a review article by Joazeiro (1980).

12.2.4. *Cloning of meristems on virus-free (seedling) rootstocks (micrografting)*
It is not possible to include a meristem to grow, or a shoot obtained from meristem culture will not form roots, then it is possible to graft the meristem onto a virus-free (seedling) rootstock, which is grown or propagated in vitro. Agra-grafting is extremely important with woody species with this grafting method is often impossible. The conventional micrografting has been used since the work of Morel and Martin (1952) with tobacco. The first successful micrografting was carried out by Kishimoto et al. (1977) and Navarro et al. (1972) working with Citrus and the water grape (1981) and Navarro et al. (1972) working with Citrus and the water grape (1981). Later other plants were used such as Citrus (1979), apple (Huang and Allilain, 1978), Camellia (Dunstan et al., 1982) and Kariba (1980) have given an appraisal of the use of micrografting in fruit crops. For an extensive analysis of the (phyto)meristem which arise during in vitro micrografting, the reader is referred to a review article by Joazeiro (1980).

Index

Copyright	3
Trademarks	3
Disclaimer.....	3
Safety Introduction	4
Product Introduction.....	5
System Requirements	6
Package Contents.....	7
Parts and Functions	8
Installing the Software	9
Connecting the Book Scanner.....	10
Getting Started.....	11
Main Window.....	11
Control Panel	13
Scanning Preparation	17
What you can do with this software?.....	18
Scanning by using Document mode.....	19
Scanning by using Book mode.....	24
Special Functions	29
Finger Removal Function	29
Auto Scan Function.....	34
Set front and back cover images	35
Usage Example	36
How to scan a nice color document?	36
How to scan document and save as PDF file?	37
How to scan a multiple page document into a PDF file?.....	38
How to use crop feature to scan multiple images at the same time?.....	39
How to scan a good quality image of name card?	40
How scan a multiple-page document into a Word file?	41
How to combine multiple images files into one PDF file?	42
How to compare multiple image files in one window?	43
How to add a Watermark in scanned document file?	44
How to set the PDF Options?	45
Supported OCR Languages	46
Questions and Answers (Q&A)	48

Copyright

All rights reserved by original manufacturer, no part of the materials shall be reproduced in any form or by any means without prior written permission.

Trademarks

Windows is a registered trademark of Microsoft Corporation in the United States and other countries. All other products mentioned in this documentation are trademarks or registered trademarks of their respective owners.

Disclaimer

- The screen shots in this user's manual were made with Windows 10. If you are using others Windows system, your screen will look somewhat different but functions the same.
- Specifications of this software and contents of this user manual are subject to change without notice. Any modification, error correction, or feature updates made in the actual software may have not been timely updated in this user manual. User may refer to the actual software itself for more accurate detail. Any misprints, translation error, or inconsistent with existing software, will be updated timely.

Disposal of Waste Equipment by Users in Private Households in the European Union

This symbol on the product or on its packaging indicates that this product must not be disposed of with your other household waste. Instead, it is your responsibility to dispose of your waste equipment by handing it over to a designated collection point for the recycling of waste electrical and electronic equipment.



Safety Introduction

1. Please read this safety information carefully before using the product.
2. After reading this Safety Introduction, please make sure to keep it in place where you can easily access while using the product.
3. The following safety precautions are intended to guide you to the safe and correct use of the product and prevent unwanted accident or damage.

Safety Precautions:

1. Do not use or store the product in direct sunlight or near a hot object. Otherwise, this may result in fire due to excessive heat.
2. Do not place a container filled with liquid such as vase, flowerpot, cup, cosmetics and chemicals near to product. Otherwise, this may result in personal injury or death due to fire to electric shock.
3. Do not use the product if liquid such as water, chemicals or oil is spilled on product. Otherwise, this may cause fire or electric shock.
4. Do not use product in the place where near the alcohol and banana oil or other inflammability liquid and avoid to-use inflammability sprayer near the product. Otherwise, this may result in fire or serious injured due to explode or outbreak of fire.
5. Wet hand is not allowed to use the product or insert the USB. Otherwise may cause fire and electric shock.
6. Do not disassemble, modify or repair the product. Otherwise, this may cause malfunction or cause the electric shock.
7. Do not direct the LED light toward to your eyes. Otherwise, this may cause damage to your eyesight or loss of vision.

Warning:

1. Do not disassemble the product!
2. Disassembling the device may cause malfunction to the product.
3. Manufacturer is not responsible for problems caused by disassembling the product by users or unauthorized personnel.
4. Do not install the device in an area prone to static electricity.
5. Do not install the product in a humid or dusty area.
6. Be careful not to spill liquid such as water, chemicals or oil on the product.
7. Do not apply excessive shock to product.
8. Do not apply excessive beading or shock to the scanner and cable.
9. Always read and follow the user manual when using or removing the product.

Product Introduction

VIISAN book scanner provides a new perspective on book scanning. Easily scan documents, receipts, name cards, books, booklets or magazines directly without cutting or damaging them.

This book scanner bundles an intelligent book scanning software, this powerful book scanning software provides very useful features and integrated with a lot of imaging algorithms such as page turning detection which can automatically scan when detect the page is turned, also it can enhance the text with background color purification of scanned documents, recognize the documents by using built-in OCR function, correct for curved pages and erase fingers from the scanned image, it provides quickly scan and easily convert scanned pages into more useful formats such as JPEG, PDF, searchable PDF, Word, Excel, and Text files.

Besides that, this software integrates very useful algorithms, for example, it can automatic flattening of curved pages, erase fingers, repair the damaged edges of documents, rotates pages based on text orientation, and automatic splits double-page into separate two images. This allows large books to be scanned and archived very quickly.

WARNING: This software is usually distributed with a dedicated book scanner of a specific band and a model number. Only when work with the qualified book scanner hardware, then this software can bring out its full and powerful potentials. When worked with non-qualified book scanners, some of features in this software may will NOT work.

System Requirements

To ensure the performance of this scanner, the following hardware system requirement is needed:

	Recommended System	Minimum System
CPU	Intel® Core™ i5 or higher processor	Intel® Core™ 2 Duo or AMD Athlon™ II processor
RAM	4GB	2GB
Graphics card	Intel® HD Graphics 5000 or higher Graphics cards, such as NVIDIA or ATI with 2GB VRAM	Intel® Standard Graphics or higher Graphics cards with 512 VRAM
Free disk space	4GB	2GB
Operating System	Win7 / Win8 / Win10	Win XP SP3
USB	USB2.0	USB2.0

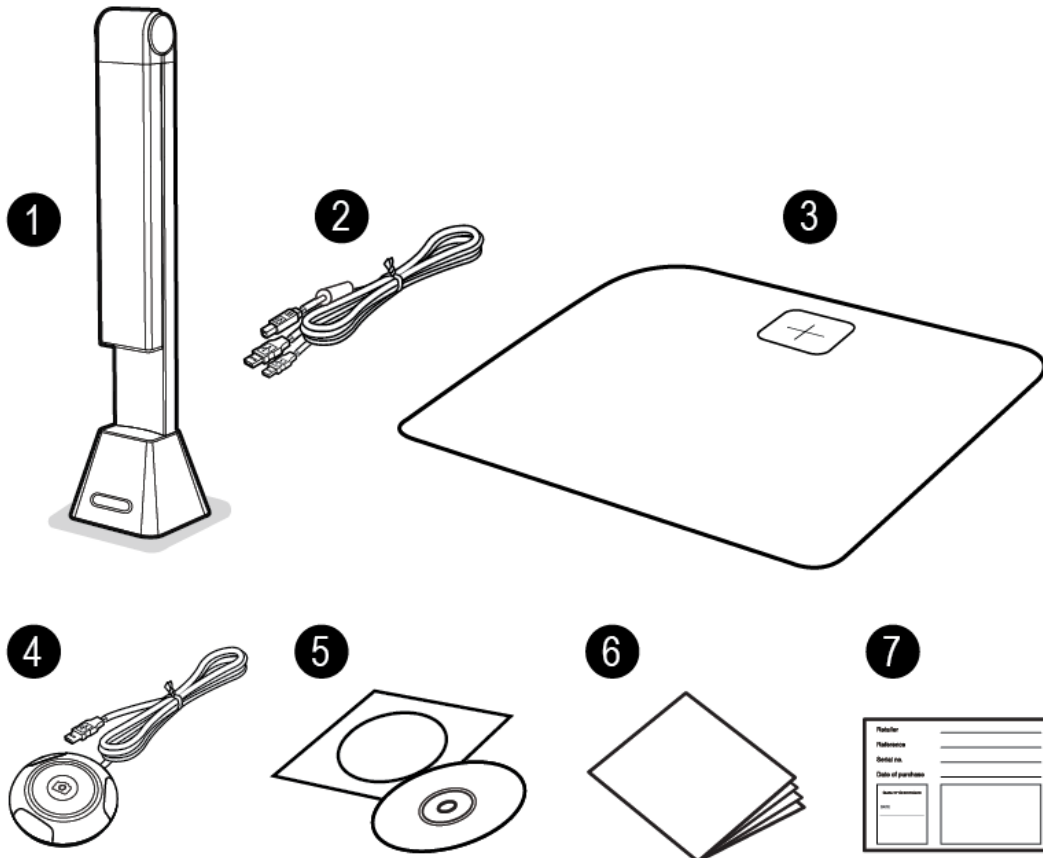
WARNING:

This software version does not work on Apple Mac OS or Linux system.

Package Contents

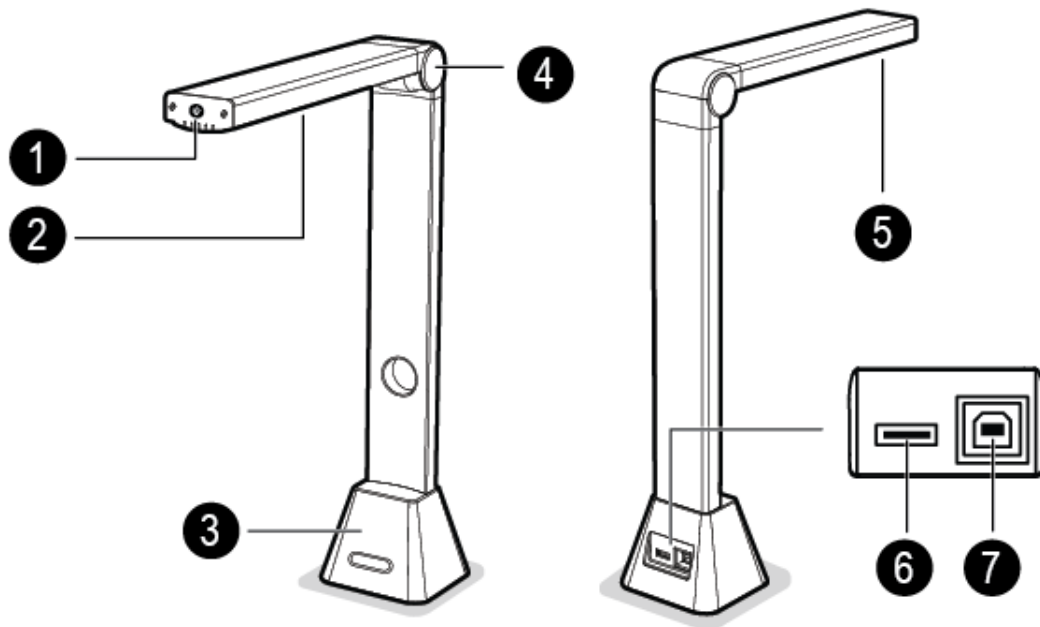
Make sure following items are included in this package. If any items are missing or damaged, contact the dealer where you purchased the book scanner.

- (1) Book Scanner
- (2) USB cable
- (3) Soft Mat
- (4) External Shutter Button
- (5) Software CD
- (6) Quick Start Guide
- (7) Warranty Card

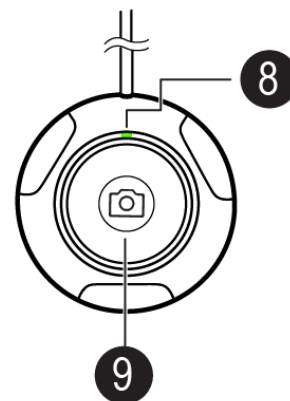


Parts and Functions

This section describes the physical components of the book scanner.



1. LED Touch Switch
2. LED Lamp
3. Base
4. Foldable Hinge
5. Camera Lens
6. USB Hub for External Button Connection
7. USB Jack for PC Connection
8. Status LED
9. External Shutter Button

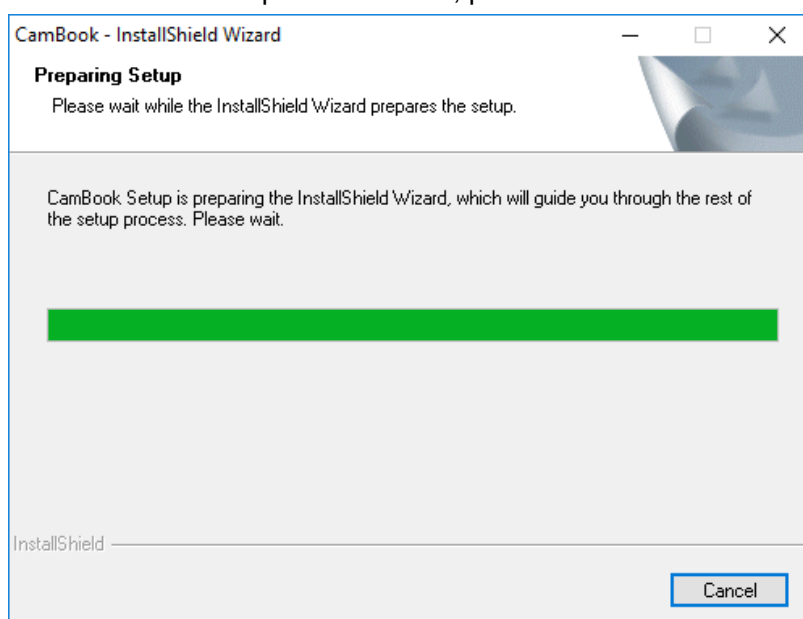


Installing the Software

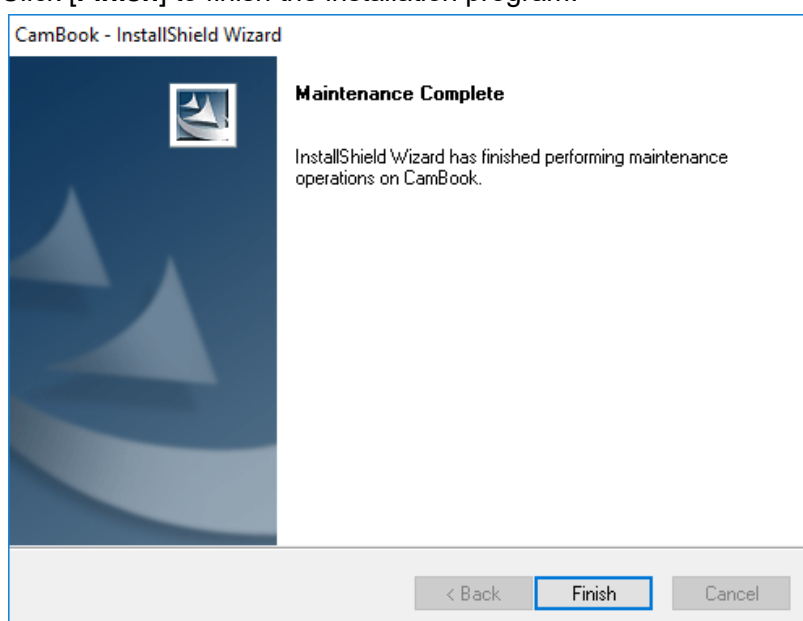
NOTE: Before installing this application software, it is recommended to close the antivirus program or security software running on your system.

If you are installing this software from a download file, please double click the .exe file to start the installation process. If you are installing this software from a CD ROM, please insert CD ROM into your CD ROM driver, then the installation process may start automatically.

1. Once the installation process started, please follow the on-screen instructions.

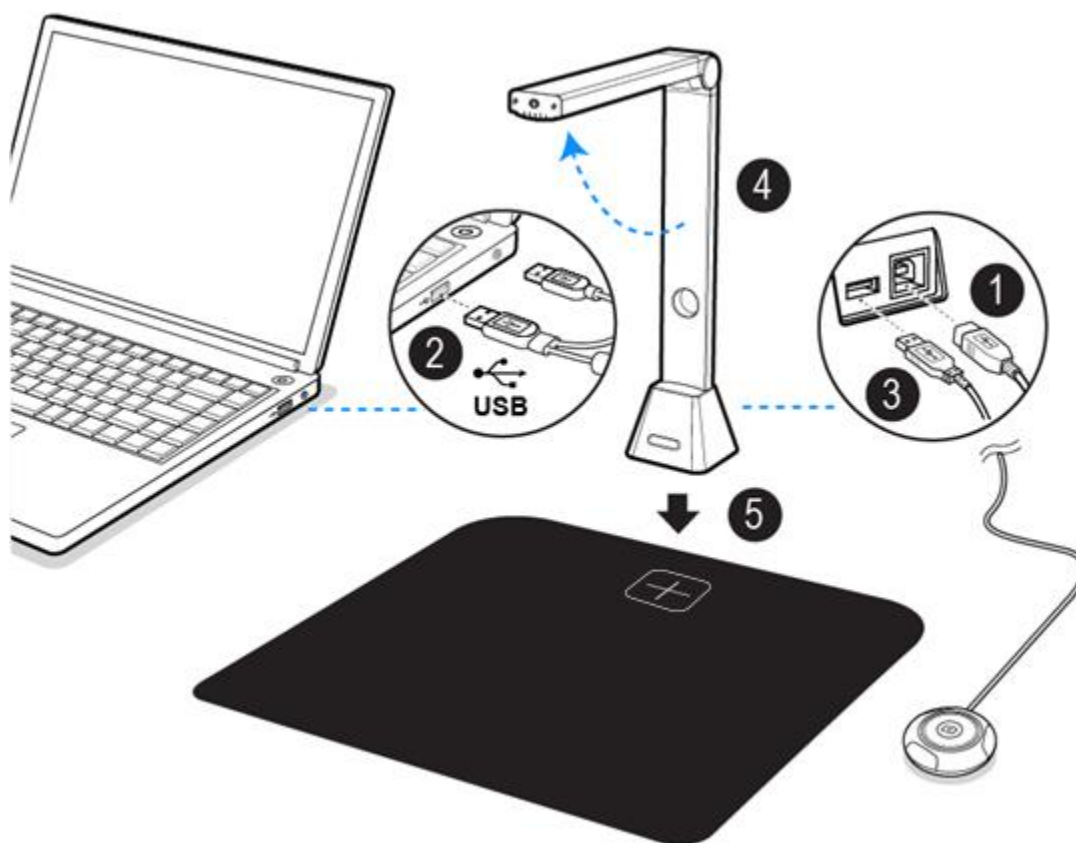


2. Click [**Finish**] to finish the installation program.



Connecting the Book Scanner

Before you start to use the scanner software, please make sure your book scanner device has been set up correctly. Please double check the following procedures before you proceed.

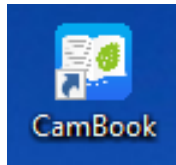


- 1) Connect the USB cable to the USB connector on the book scanner.
- 2) Connect the other end of the USB cable to your PC.
- 3) Connect the supplied external button to the USB hub on the book scanner.
- 4) Unfolding of the book scanner.
- 5) Put the book scanner on to the Scan Mat and align to [+] mark. (The dark color Scan Mat is used to ensure to get a good image and accurate cropping of the targeted objects).

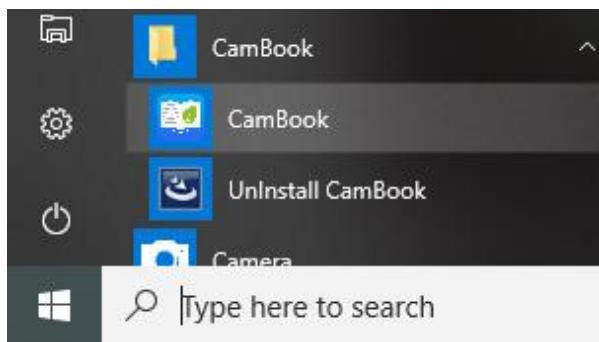
NOTE: When the USB cable is connected, please wait for a while until Windows is detected the camera device.

Getting Started

- To start the program, please double click on the CamBook scanning software icon on the desktop.

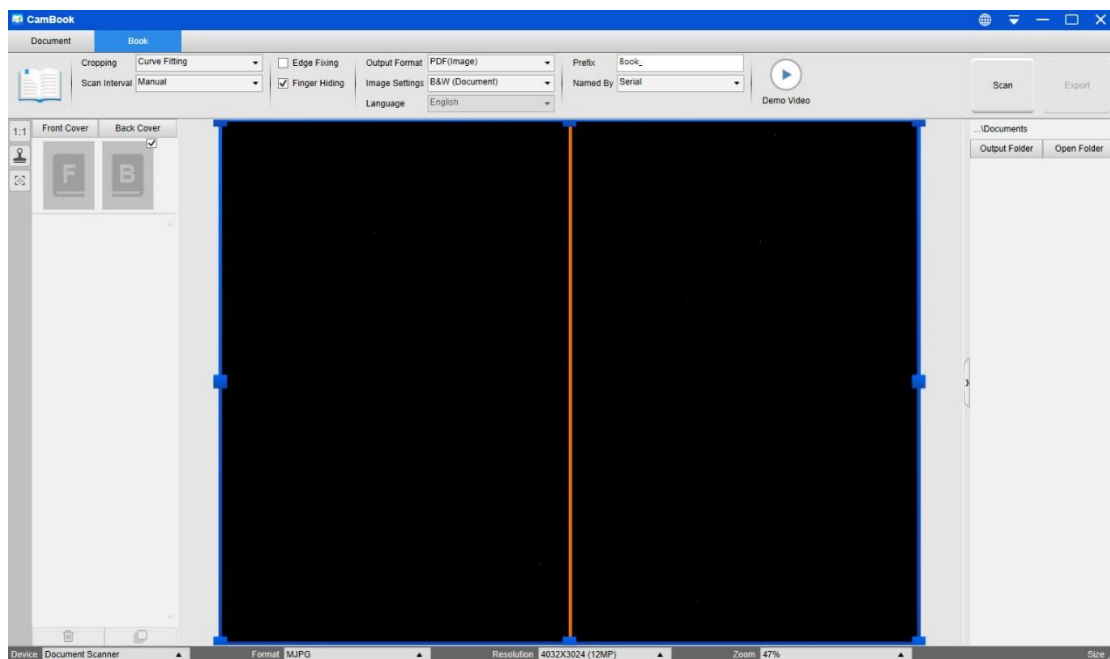


- Or start CamBook from the Windows Programs list:
Click the Windows Start Menu > All Programs > CamBook folder > CamBook.



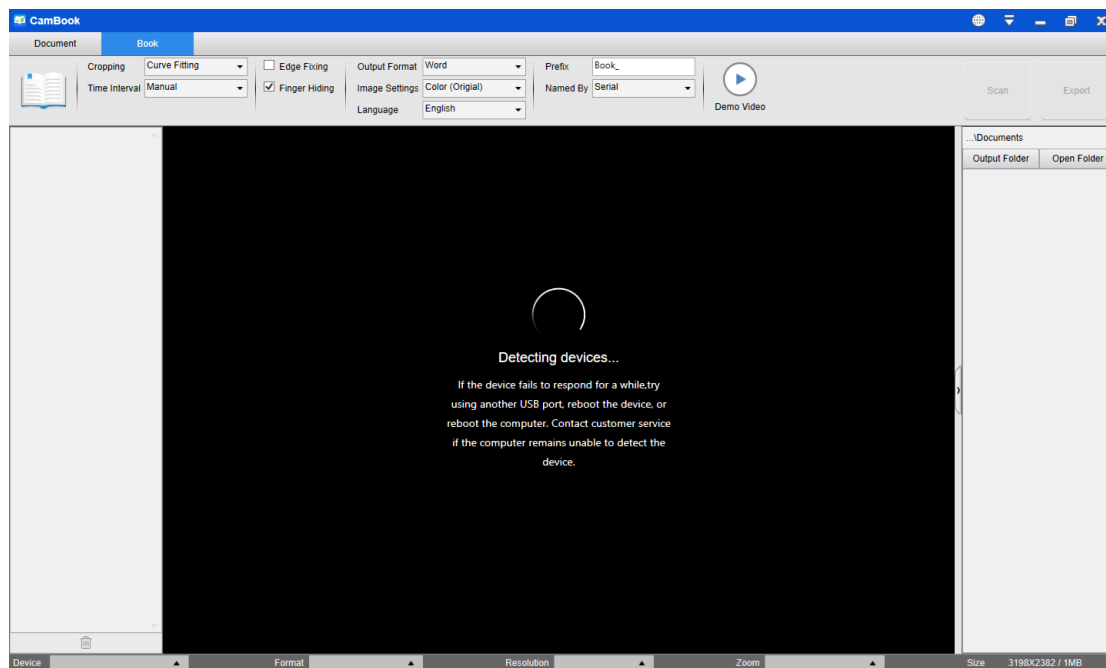
Main Window

When the software is launched, you should see the main window appears as shown below. In the middle of the main window, you should be able to see the real-time preview video from the camera device.



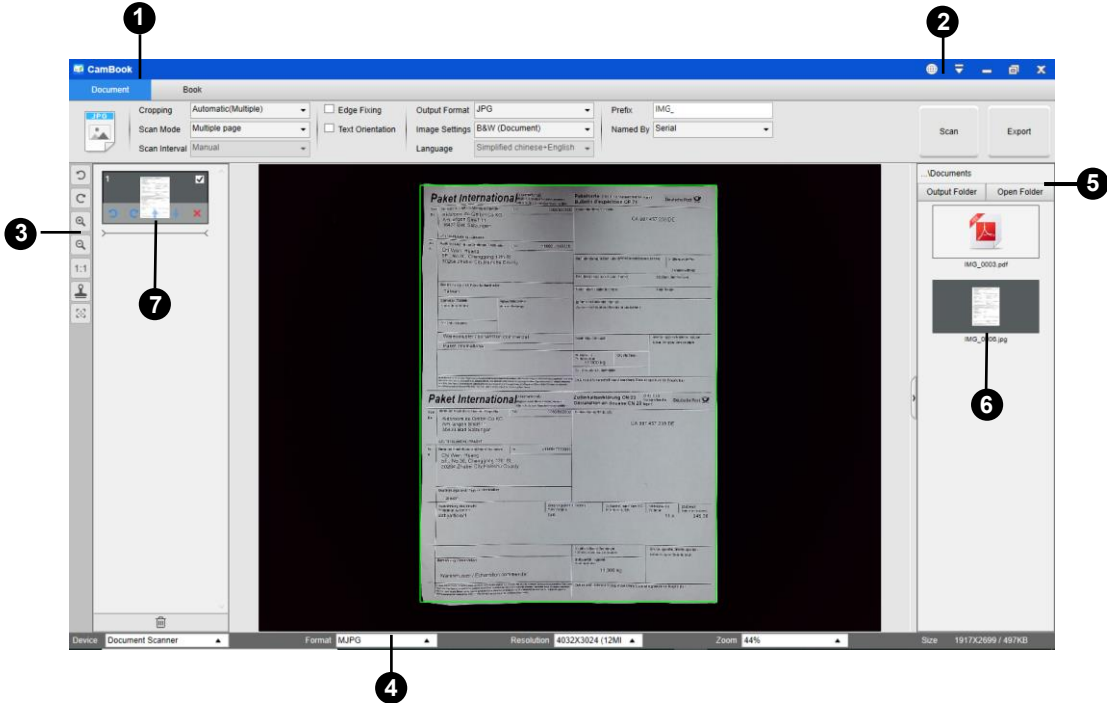
NOTE: If you don't see the real-time preview video from the camera device and displayed **[Detecting devices...]** message in the middle of the main window as below, please double check the following items sequentially.

- 1) Please make sure your hardware device is connected to your PC via a USB cable correctly.
- 2) Please make sure you have lift-up the book scanner horizontal arm, which is supposed to be 90 degrees from its vertical stand. (If the camera arm is closed, then you will likely see a complete black video even if the camera is working correctly.)
- 3) Please try to connect the USB cable into another USB Port or reboot your PC.

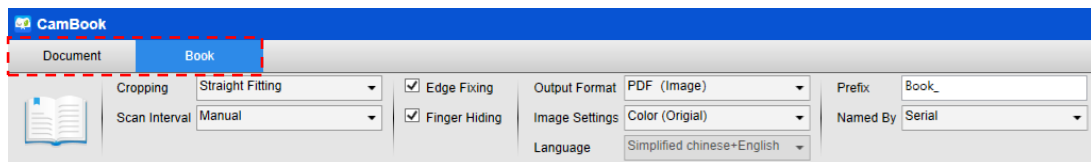


Control Panel



Here is the default look for CamBook control panel. You can make change with following settings:



(1) Function Tabs





There are 2 major functions **[Document]** & **[Book]** modes available. You can select different function modes by clicking on the function names shown on the menu bar area.

Mode	Icons	Description
Document		The Document mode is using for scan documents, name cards, ID cards or any paper sheets, this mode provides many useful image processing features, such as repair the damaged edges of documents or rotates pages based on text orientation, it allows scan and save to a JPEG or PDF file directly, even to create the OCR and convert scanned files into editable Word/Text/Excel formats.
Book		The Book mode is using for scan books or booklets, this mode provides many useful features, such as automatically scan, erase fingers, and flatten curved pages fingers.










(2) Menu Control Settings

On the top side of the main window, there are two control buttons available:

Buttons	Explanations	Note
	Language	Language settings for software UI
	Settings	Control settings for the main window

(3) Toolbar

On the left side toolbar, there are many useful control tools available:

Buttons	Explanations	Note
	Rotate Left 90 Degrees	
	Rotate Right 90 Degrees	
	Zoom Out	
	Zoom In	
	Fit Screen / 1:1 Display	
	Watermark (Add watermark on images)	Only available for some of Function Modes
	Manual Cropping	Manual cropping for a scanning area
	Full Screen (Enter Visual Presenter mode)	Only available in the [Video] Function Mode
	Focus (Trigger the Auto-Focus action)	Only available for book scanners that support Auto-Focus feature

NOTE:

The “Focus” button may appear if and only if you have a book scanner that can support the Auto-Focus features. By clicking on this button, user can manually trigger the camera to adjust the lens focus again automatically.

(4) Device Settings

On the bottom side of the main window, there are some control settings for the camera device:

Button	Explanations
Device	Selecting camera devices
Format	Selecting the camera video output format
Resolution	Selecting the camera video resolution

NOTE:

- In the [Format] options, there are usually two options, YUV or MJPEG. YUV is an uncompressed video format, and MJPEG is a compressed video format type. Selecting MJPEG format will allow higher video frame rate than selecting YUV format, but not all the camera devices support MJPEG format option.
- In the [Resolution] options, selecting higher resolutions will cause lower video frame rate. If you are capturing a still image or scanning a document, please select the highest resolution available. If you are using this device as visual presenter, then selecting a lower resolution may bring more smooth video experience.

(5) File Save Settings

On the right side of the main window, there are options for setting the directory for saving files:

Button	Explanations
Select	Select file save path
Open	Open the current file location

NOTE:

- Each Function Mode has its file save destination. For example user can set and change the save path into different destination.
- Even though each Function Mode has its own separate file save destination, all these Function Modes have the same default file-saving-directory path after this software is installed.

(6) File Compare & Convert Settings

By right click on the image files shown in the file fetching column on the right side of the main window, you will see the following options:

Right Click Options	Explanations
Open	Open an image file
Copy	Copy a file
Rename	Rename a file

Delete	Delete a file
Compare	Compare multiple images in one window
Convert into PDF	Convert or merge multiple images files into one PDF file
Convert into TIF	Convert or merge multiple images files into one TIF file
Convert into Text	Convert or merge multiple images files into one Text file
Convert into Word	Convert or merge multiple images files into one Word file
Convert into Excel	Convert or merge multiple images files into one Excel file
Email	Send an image file as an email attachment
Print	Print an image file by using a printer
Property	Show the property window






NOTE:

- The “Compare” and “Convert” functions can work on one or more image files at the same time. User can use the “shift key” or “Ctrl key” on the keyboard to help select multiple image files.
- When using “Email” function, please make sure your computer have installed an email software, such as Microsoft Outlook.

(7) Preview Window

On the left side preview window, you can use following tools that shown on each thumbnail image to rotate the scanned image, change order or delete it. You can also double-click on the thumbnail image to enter to the Document Page Editor mode.



Button	Explanations
	Rotate Left 90 Degrees
	Rotate Right 90 Degrees
	Move up image
	Move down image
	Delete image

NOTE: The left side preview window only available when the Scan Mode settings is selected to “Multiple Image”.

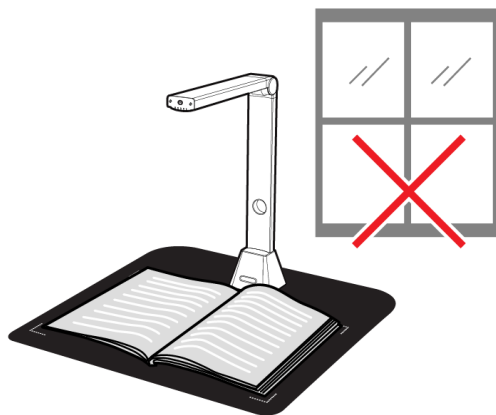
Scanning Preparation

- 1) To start scanning, please place the book scanner on a surface table or desk.
- 2) Review your own needs and select the proper processing modes of either [Document] or [Book] from the scanning software.

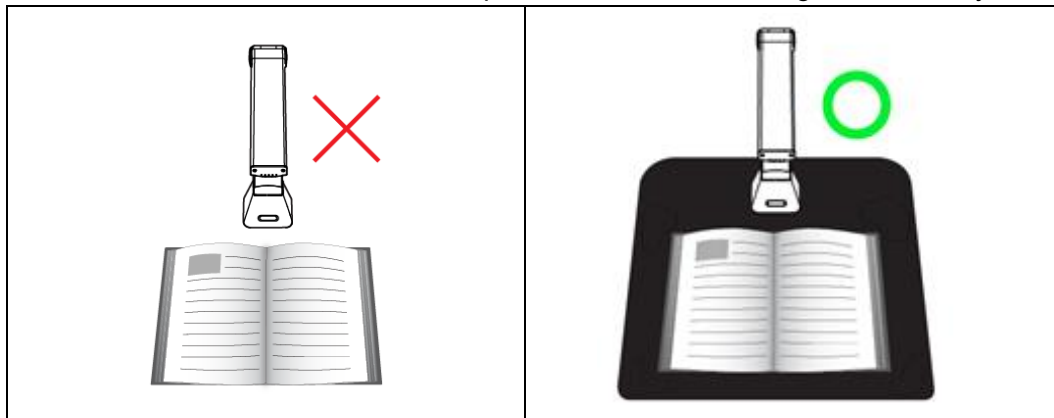


Reminders:

- 1) Avoid scanning documents or books in places near the window, because environments with strong lighting. Excessively bright ambient lighting will affect the brightness and affect scanning results.



- 2) Ensure that you have use the supplied black scan mat to scan with your book material and the book have been placed within the scanning area correctly.



What you can do with this software?

The CamBook software provides overhead scanning has a scanning unit that does not touch documents. the following operations can be performed with the software.

Book Scanning

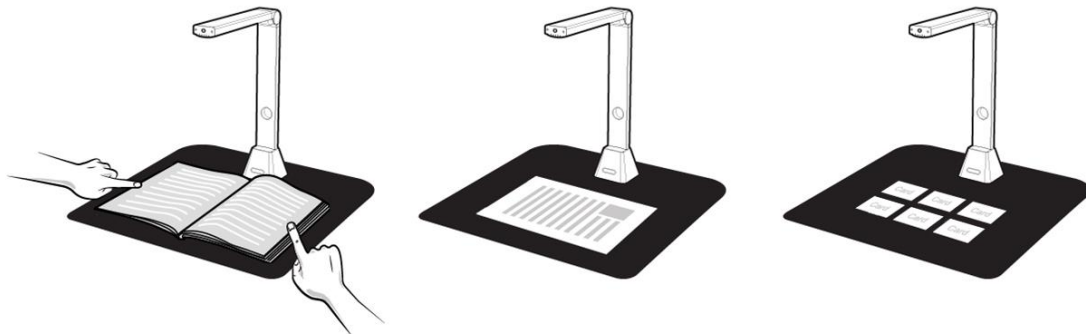
A book or booklet that is up to A3 in size can be scanned without cutting pages out. When a page scanned the software will automatic flattening curved page and splits it into two separate images.

Document Scanning

Scan documents or other paper materials with size up to A3. When a document scanned, the scanned image will be cropped and de-skewed automatically.

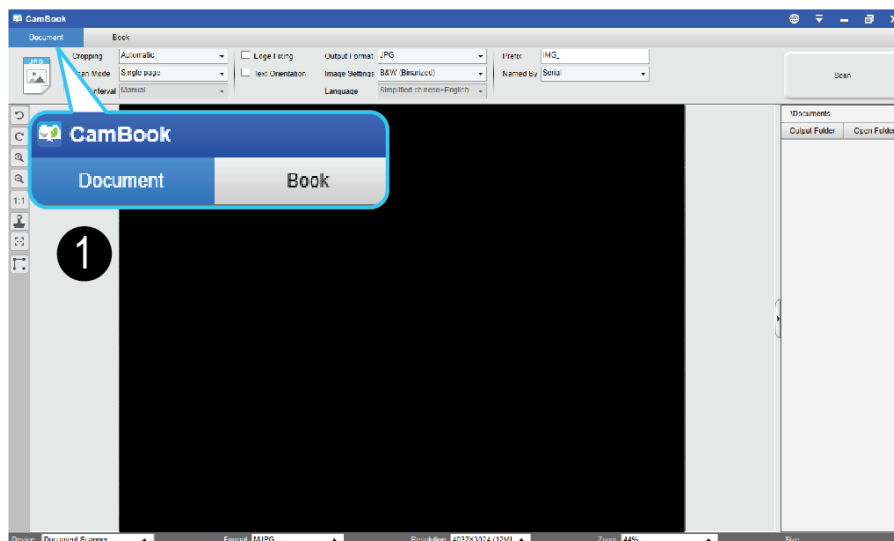
Multiple Cards Scanning

Scan multiple documents such as name cards or other types of cards can be scanned at once. When multiple cards are scanned, the scanned images are will be cropped and corrected skewed into separate images for respective documents.



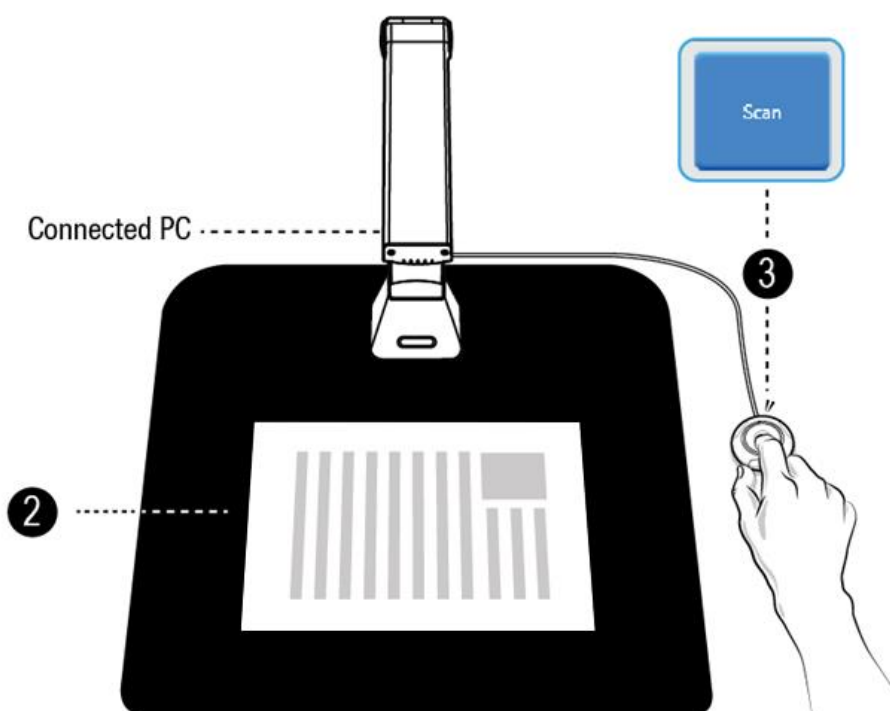
Scanning by using Document mode

- 1) To scan document materials, select the top function tab to [Document] mode. You can make any changes in the settings menu as necessary.

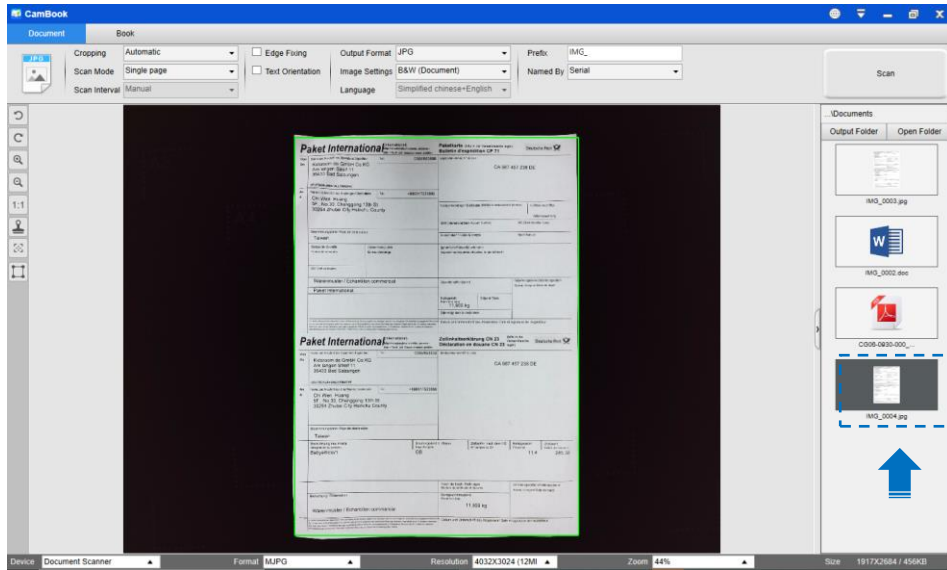


- 2) Place a document facing up on to the center of black scan mat.
- 3) Set the cropping to [Automatic] and click [Scan] button in the upper right corner of scanning software to scan an image, you may also press the external shutter button to initiate scanning.

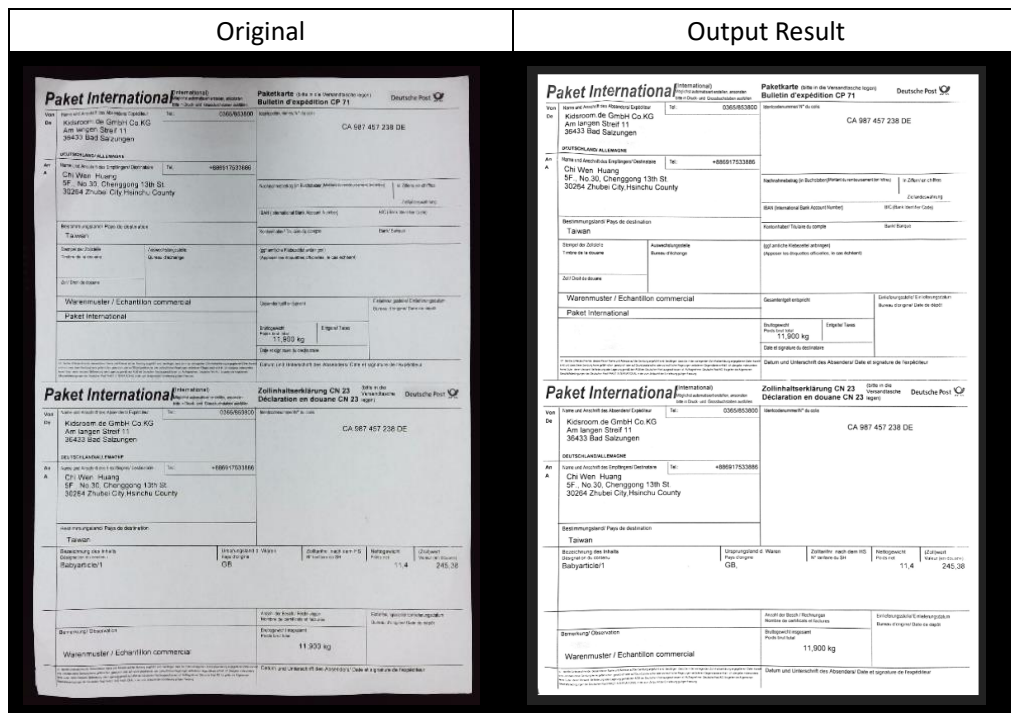
NOTE: To continue scanning additional pages, click [Scan] button and repeat this step to scan additional images.



- When scanning is completed, the scanned image will be showed on the right-side output window, you can double-click on the thumbnail image to open the scanned result.




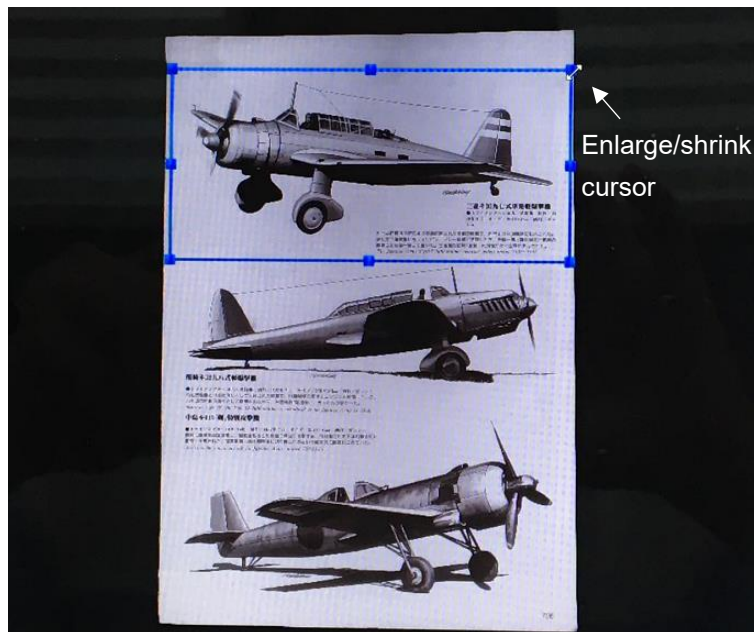
- The following is an example for scan in B&W (Document) mode.




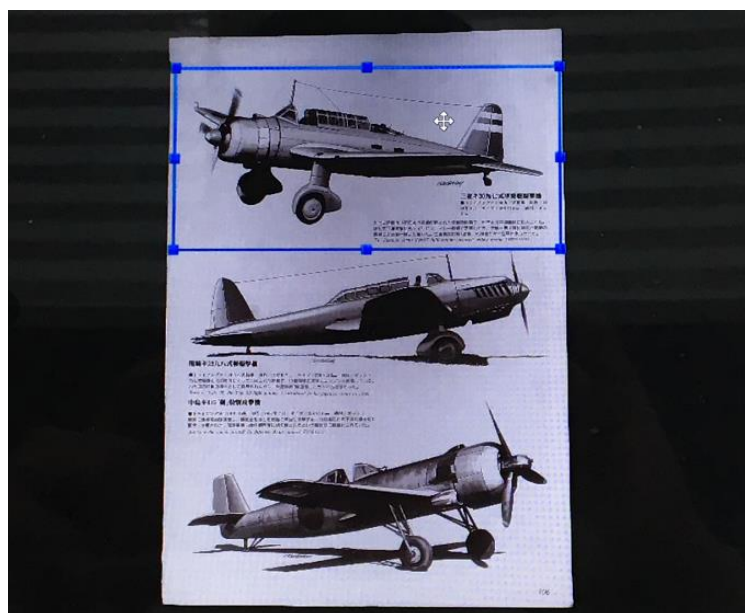
Manual Cropping

This software allows user to manual crop for a scan object before scanning the final image. To adjust cropping frame please follow below methods.

1. Select the cropping to "Self-Defined".
2. Move the blue cursor to a corner or an edge of the crop frame (the blue cursor will change to ). Click and drag the cursor to enlarge or shrink the cropping frame to the desired size.

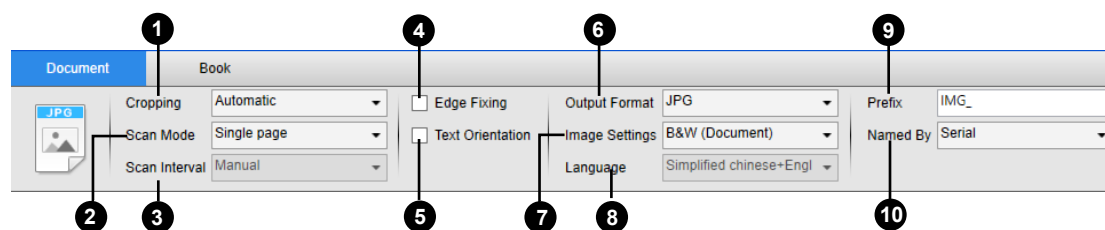


3. Move the blue cursor within the cropping frame (the cursor will change to ). Click and drag the cursor to move the entire cropping frame to the desired area.



The Scan Settings of Document Mode

In the document function mode, you can use following feature settings:

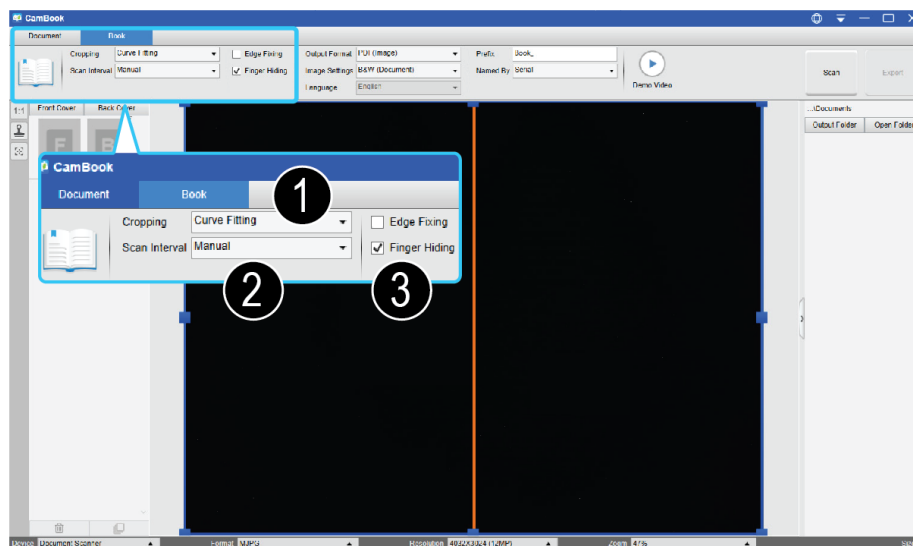


Item	Feature Settings	Setting Options	Explanations
1	Cropping	Automatic	Automatic crop for a single object
		Automatic (Multiple)	Automatic crop for multiple objects
		Self-Defined	Manual crop for a single object
		No Cropping	Scan without cropping
2	Scan Mode	Single Page	Scan single page for a document
		Multiple Page	Scan multiple-page of document by continuous scanning
		Dual (Left-Right)	Scan both-side document with left and right merge
		Dual (Top-Bottom)	Scan both-side document with Top and Bottom merge
3	Scan Interval	Manual	Manual scan by click [Scan] button
		Automatic	Automatically scan when the camera detects a page is turned
		Repeat (5sec)	Automatic scanning by countdown 5 seconds
		Repeat (7sec)	Automatic scanning by countdown 7 seconds
4	Edge Fixing		Automatic crop one document and repair the damaged edges
5	Text Orientation		Automatic rotate page based on text Orientation
6	Output	JPEG	Save as JPEG file
		PDF(Image)	Save as image-based PDF file
		PDF(Searchable)	Convert image into searchable PDF file
		PDF(Text)	Convert image into editable Text PDF file
		Text	Convert image into editable Text file
		Word	Convert image into editable Word file
		Excel	Convert image into editable Excel file
	Image	B&W (Document)	Output image in Black & White and make

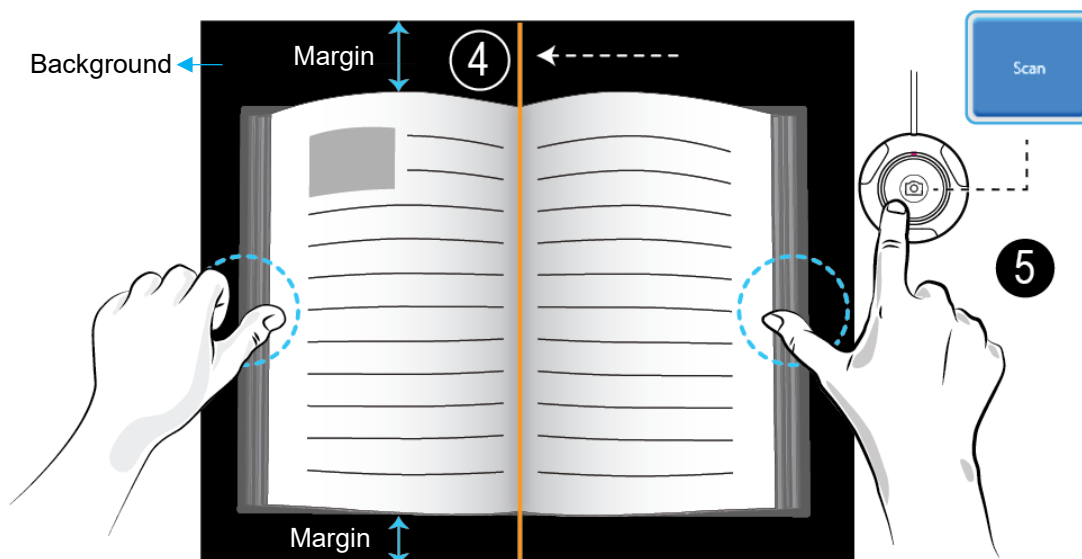
7	Settings		whiten background
		B&W (Binarized)	Output image in Black & White binary
		B&W (Red Stamp)	Output image in Black & White and keep red stamp
		Color (Original)	Output image in original color
		Color (Enhanced)	Output image with color enhanced
		Gray	Output image in grayscale
8	Language	Select OCR language Note: Ensure to select the correct language of the original text from the drop-down menu to perform text recognition.	
9	Prefix	Add prefix for the file name	
10	Name By	Serial	Name by serial number
		Date & Time	Name by date and time

Scanning by using Book mode

1. To scan book or booklet, select the top function tab to [Book] mode.
2. According to the thickness of the book to select scan with “Curve Fitting” or “Straight Fitting” from the drop-down menu of Cropping and then set the Scan Interval to “Manual”.
3. Check the “Finger Hiding” feature. (If necessary)

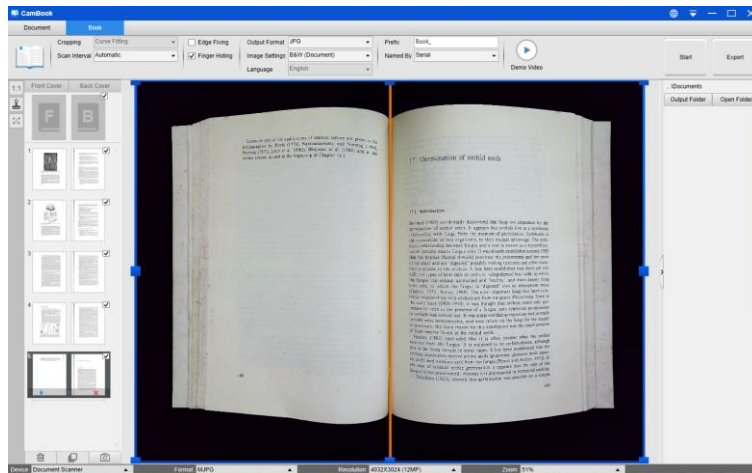


4. Place an opened book facing up on the black scan mat and then align the center of the opened book with the vertical orange line on the screen.
5. Press your fingers against on the both sides of the opened book and then press the [Scan] button to perform a scanning as below example.

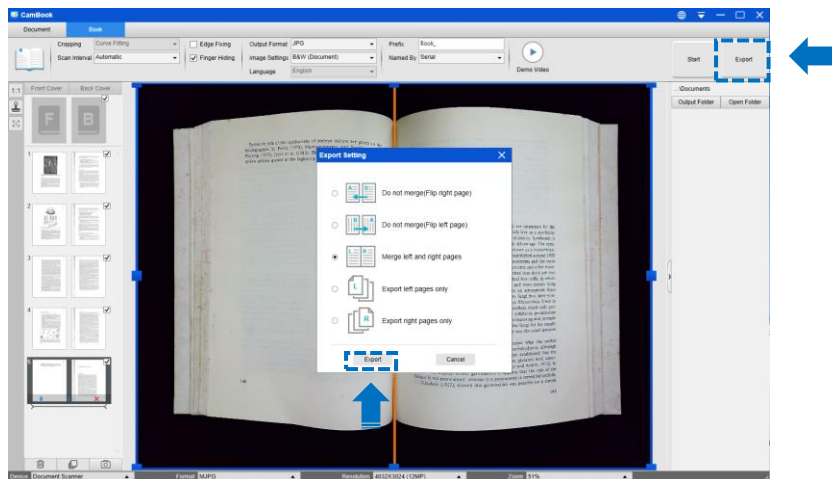


NOTE: The book must be placed within the scanning area and ensure that you have reserved enough margin space on the top and down of background, because too narrow margin of background will affect the page flattening performance.

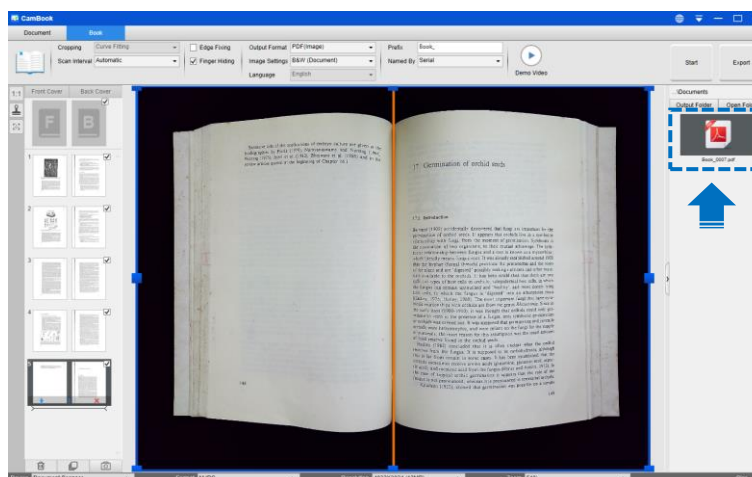
6. After scanned the software will automatic flattening curved page and splits them into two separate images then display on the left-side preview window.



7. To export the scanned images, press [Export] button in the upper right corner to open the Export Settings menu.
8. Select a type and then click [Export] button to output your scanned images.








9. After exported, the file will be showed on the right-side output window, you can double-click on the file icon to open the scanned result.

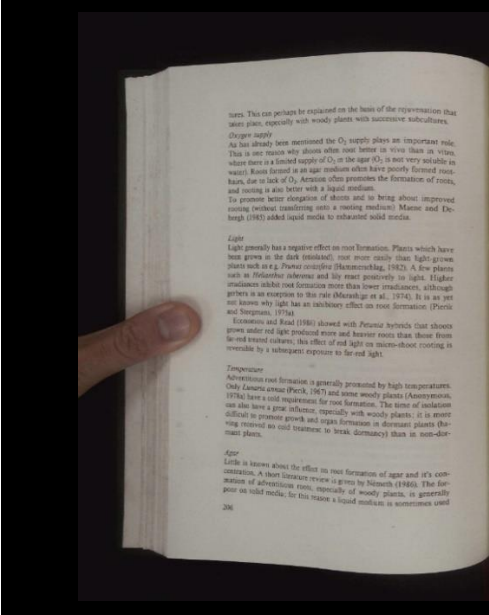
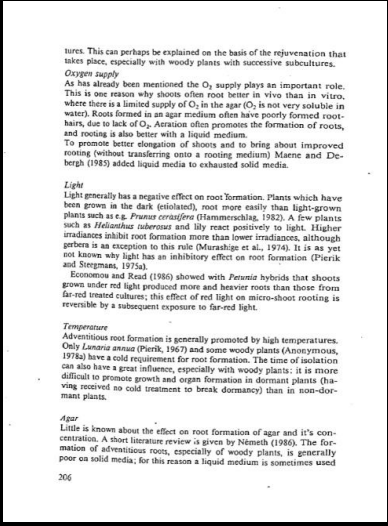


Export Settings:

Here are some options for export the scanned page.

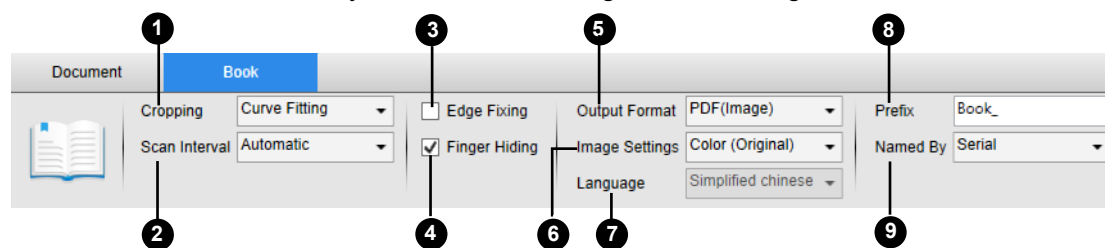
Page Export Settings	Descriptions
	Export without merge. This for flip right page book
	Export without merge. This for flip left page book.
	Export with merge left and right pages.
	Export left pages only.
	Export right pages only.

NOTE: The Export Settings only available for Book scan mode, the following is an example for automatic flattening curved page and erasing finger in [Book] scan mode.

Original	Output Result
	

The Scan Settings of Book Mode

In the book function mode, you can use following feature settings:



Item	Feature Settings	Setting Options	Explanations
1	Cropping	Curve Fitting	Automatic flattening curved pages NOTE: This is use for scanning thicker books with curved surfaces
		Straight Fitting	Automatic flattening straight pages NOTE: This is use for scanning thinner booklets with straight surfaces
2	Scan Interval	Manual	Manual scan by click [Scan] button
		Auto	Automatically scan when the camera detects a page is turned
		Repeat (5sec)	Automatic scanning by countdown 5 seconds
		Repeat (7sec)	Automatic scanning by countdown 7 seconds
3	Edge Fixing		Automatic crop one document and repair the damaged edges
4	Finger Hiding		Automatic erase fingers
5	Output	PDF(Image)	Save as image-based PDF file
		PDF(Searchable)	Convert image into searchable PDF file
		PDF(Text)	Convert image into editable text PDF file
		JPEG	Save as JPEG file
		Text	Convert image into editable Text file
		Word	Convert image into editable Word file
6	Image Settings	B&W (Document)	Output image in Black & White and make whiten background
		B&W (Binarized)	Output image in Black & White binary
		B&W (Red Stamp)	Output image in Black & White and keep red stamp
		Color (Original)	Output image in original color
		Color (Enhanced)	Output image with color enhanced
		Gray	Output image in grayscale

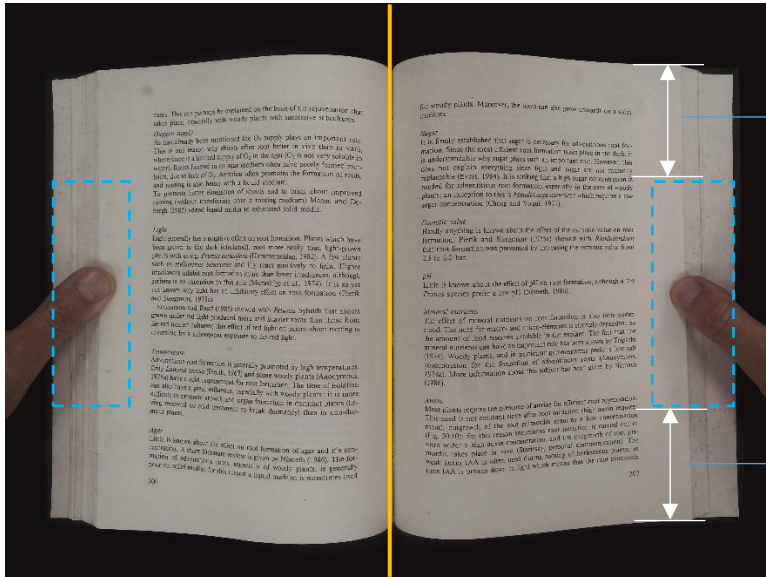
7	Language	Select OCR language Note: Ensure to select the correct language of the original text from the drop-down menu to perform text recognition.	
8	Prefix	Add prefix for the file name	
9	Name By	Serial	Name by serial number
		Date & Time	Name by date and time

Special Functions

Finger Removal Function

The CamBook offers a very useful function which detects fingers at the margin of books and erases them from the scanned image. The following requirements must be fulfilled to using the "Finger removal" function properly.

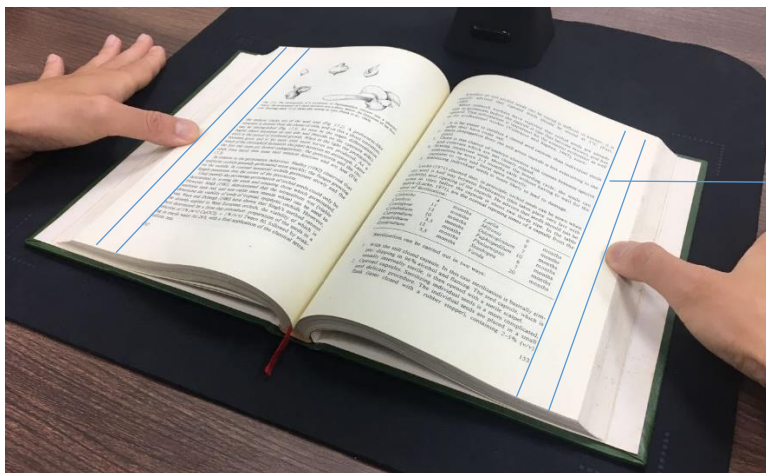
1. Ensure that you have checked the [Finger Hiding] function from the software.
2. Place an opened book facing up on the black scan mat.
3. The center of the book must be aligned to the vertical orange line on the screen.
4. The fingers should be placed on the middle side of the opened book.



1/4
A quarter space of book length.

1/4
A quarter space of book length

5. The fingers should be positioned with distance to the text elements in the book as following picture example.



Keep a distance at least 10 mm between text and finger

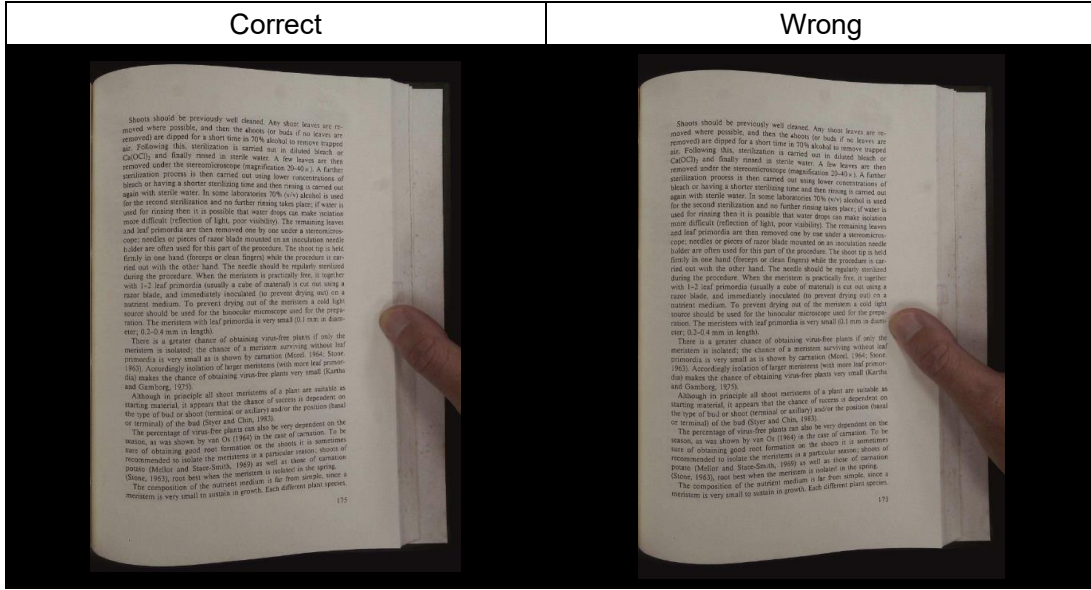
NOTE: If the distance is too small, the finger removal function may not remove the fingers from the scanned image correctly.

Correct Finger Position

There are some finger positions may cause malfunction of the "Finger Removal" function. The following are a few examples of correct and wrong finger portions.

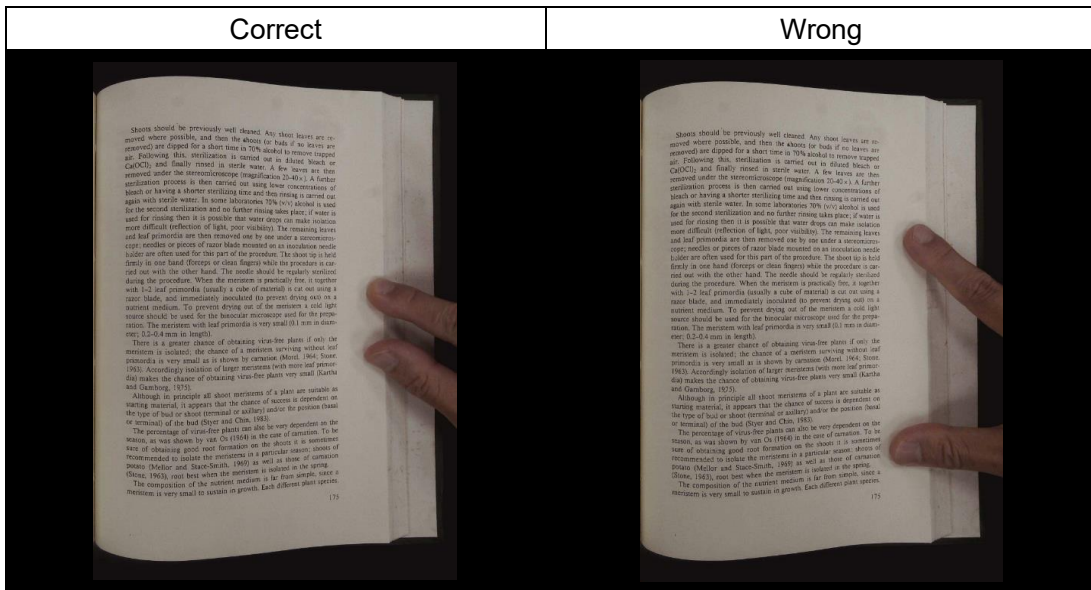
Distance too small

The fingers should be positioned with distance to the text elements in the book as following picture example. Do not place the finger too close to the text of the book.



Multiple fingers hold the book

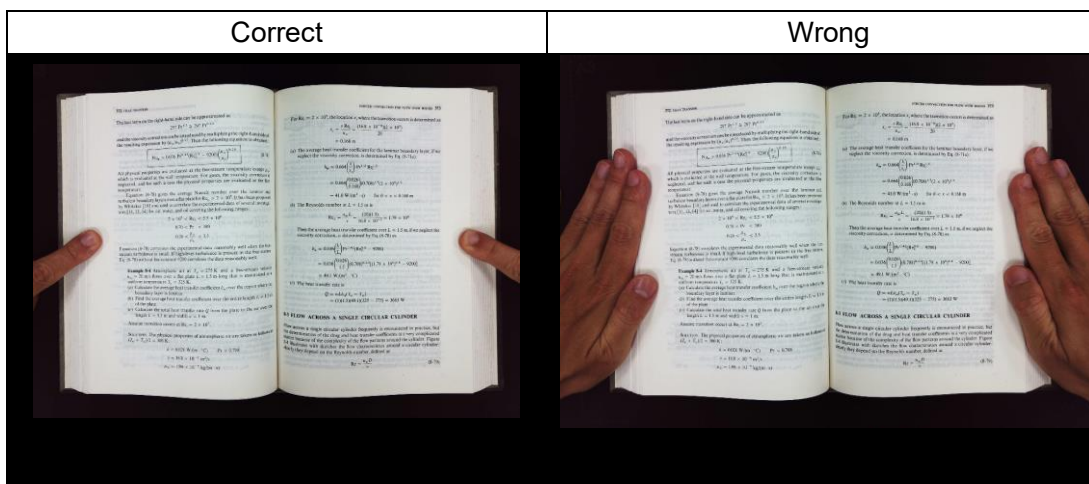
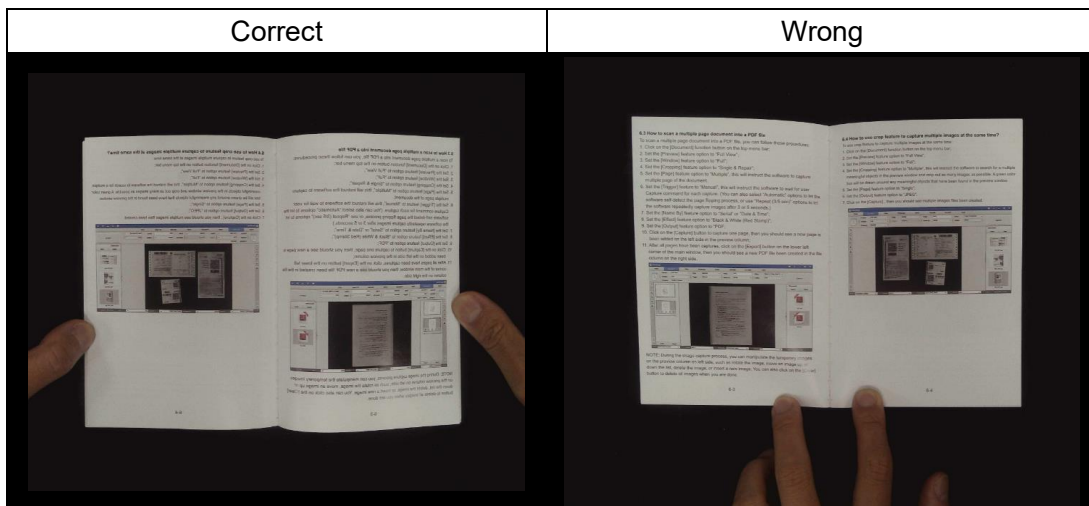
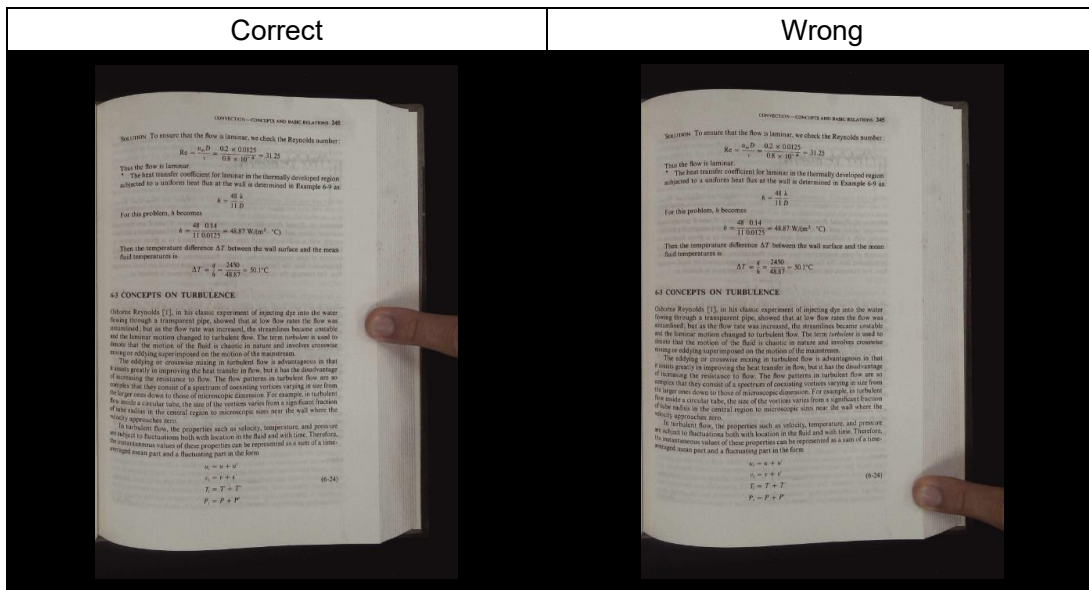
Place your fingers together in the middle side of the book, when using multiple fingers to hold down the book. Do not spread your fingers apart too far.



Single Finger Position

Always keep your finger straight and place on the middle side of the opened book.

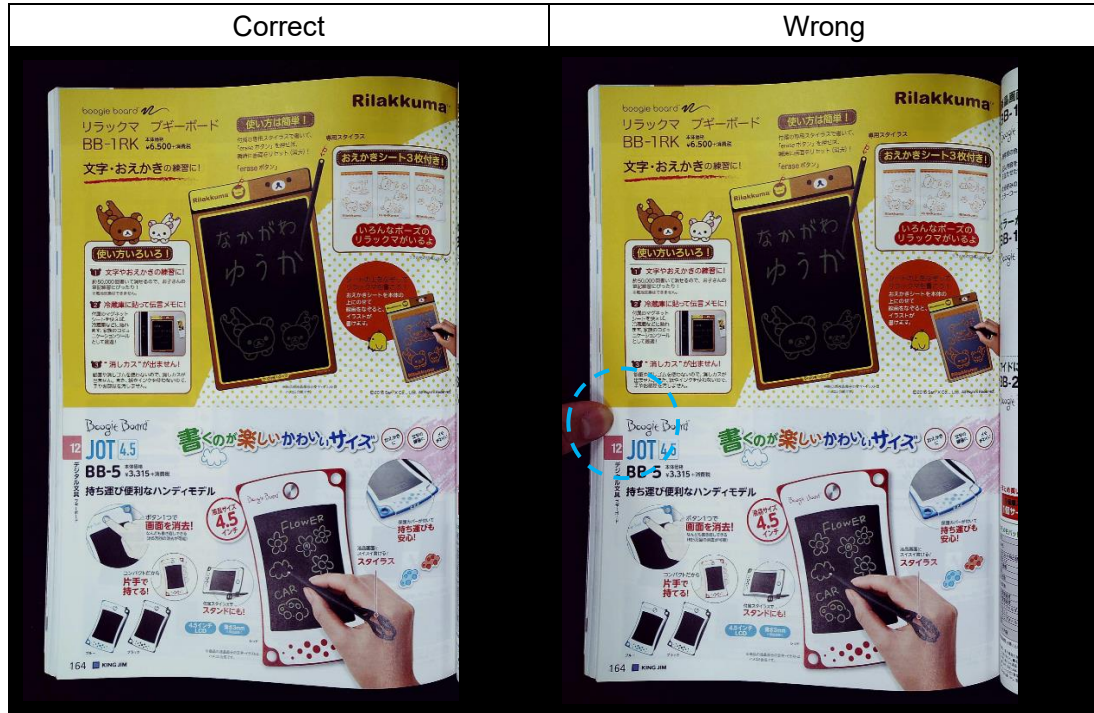
Do not place your finger on the top and bottom of the opened book.



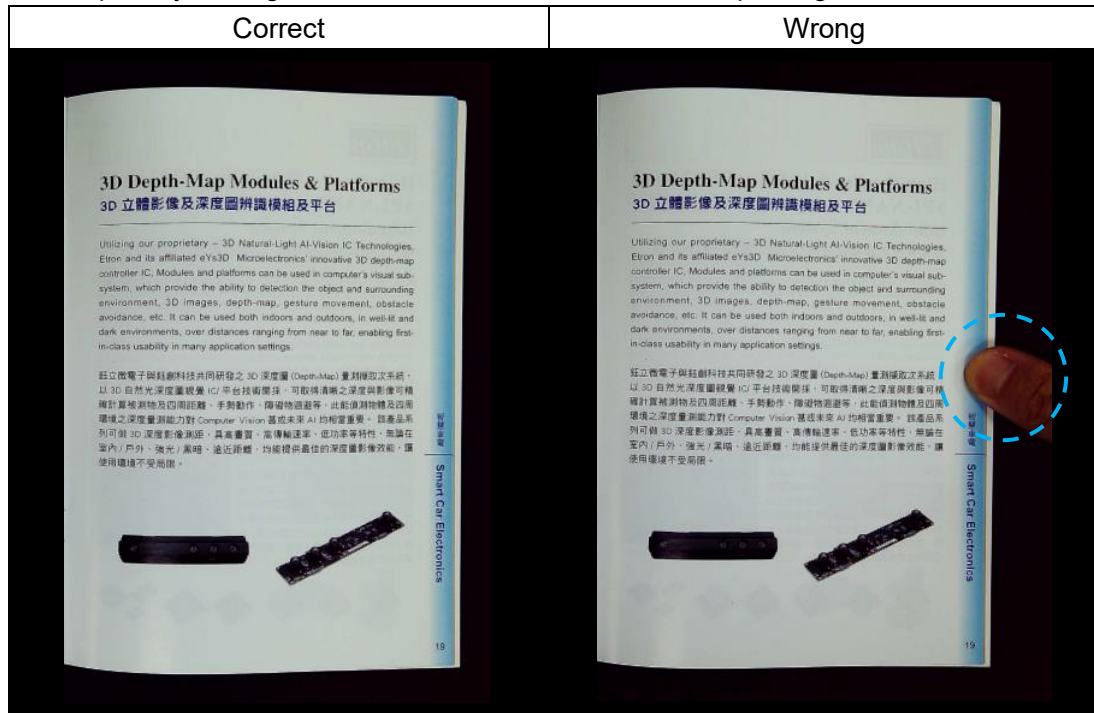
Mixed Patterns and Colors

To scan a flat color magazine or catalog, we recommend to turn-off the “Finger Hiding” function from the scan settings, because the finger removal function may cause malfunction, the reason is that the analyzing algorithm detected at the border of the image an area of mixed patterns and colors.

Do not place your finger on the book border that with mixed patterns.



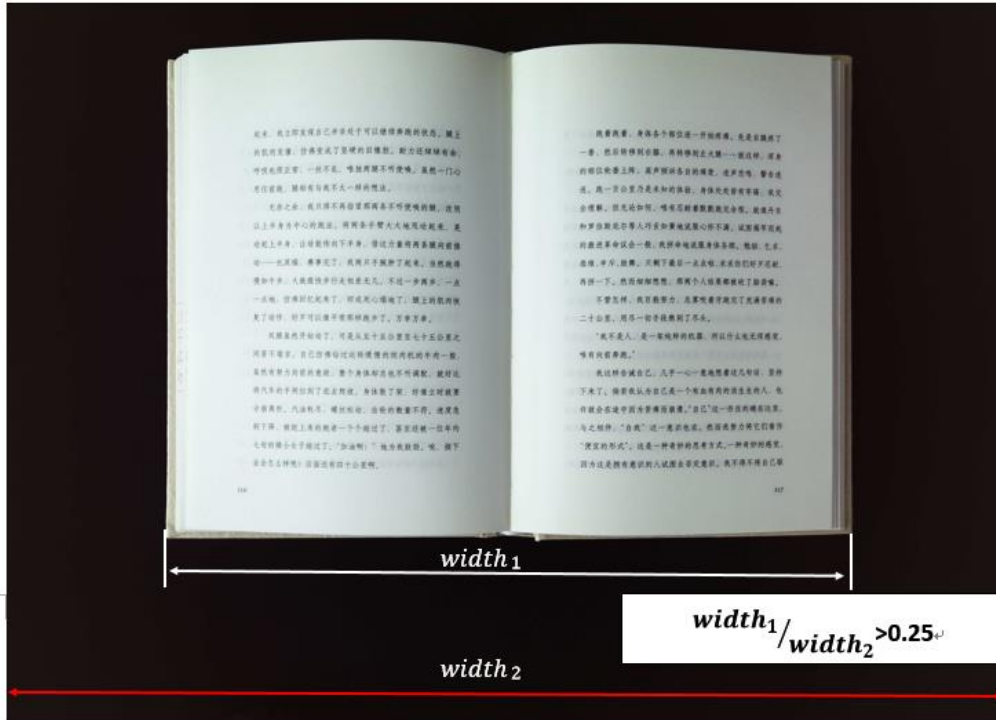
Do not place your finger on the book border that with color printing.



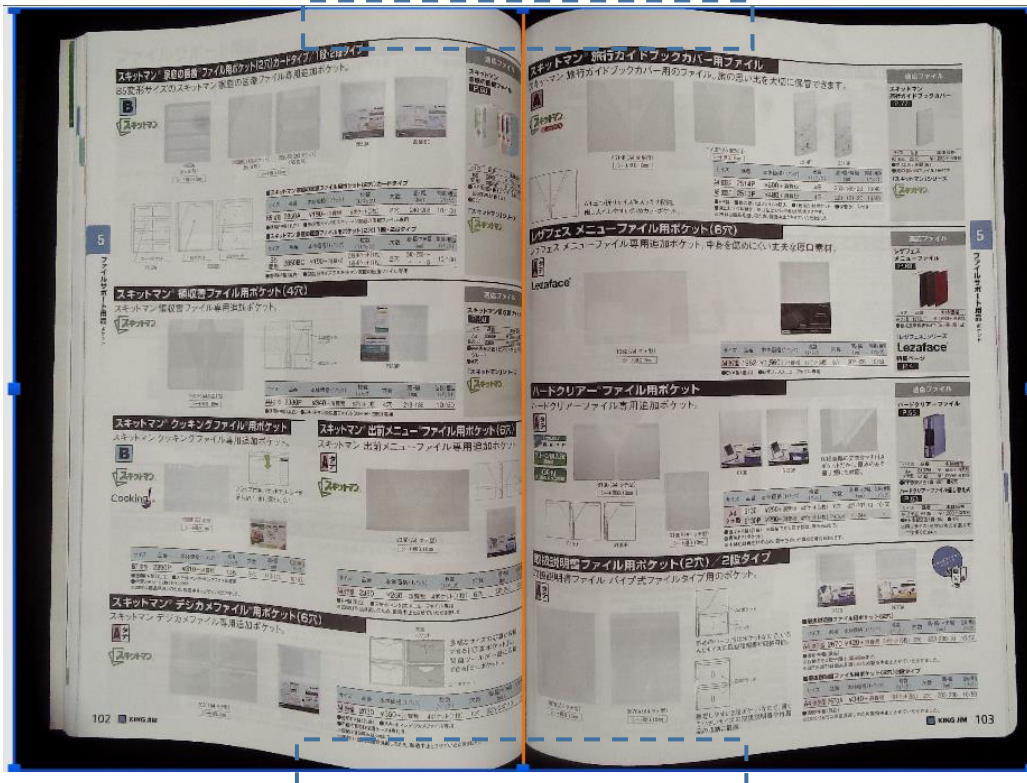
Scan Size Limited

An opened book can't less than one-half the width of scanning area.

If scan with too small size book, the finger removal function may not remove the fingers from the scanned image correctly.

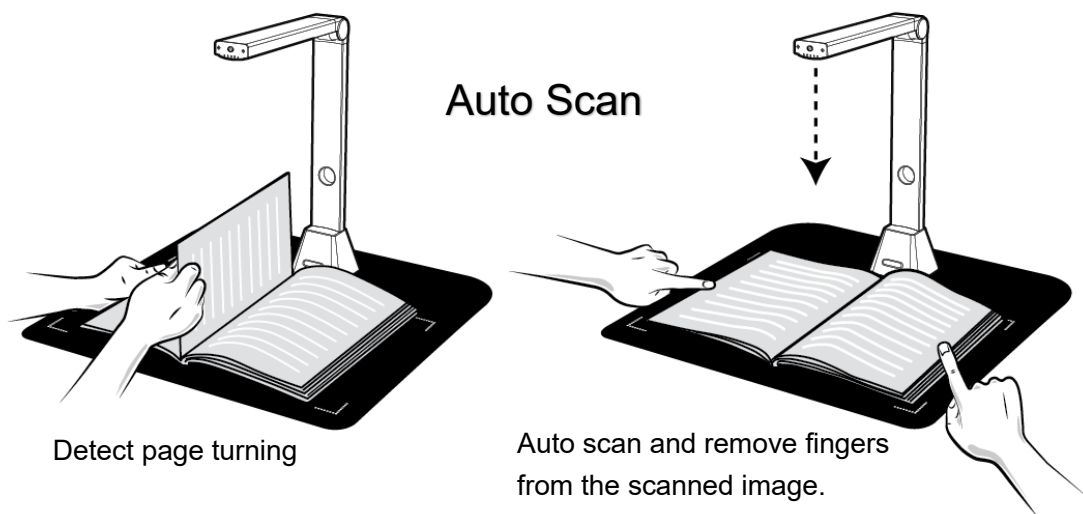
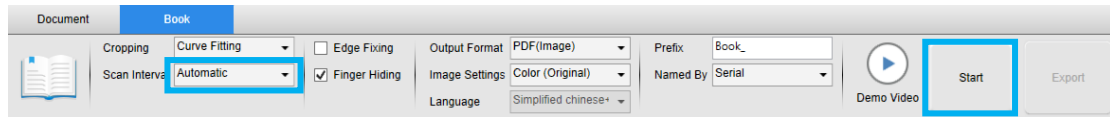


Do not place the book out of the scanning area.



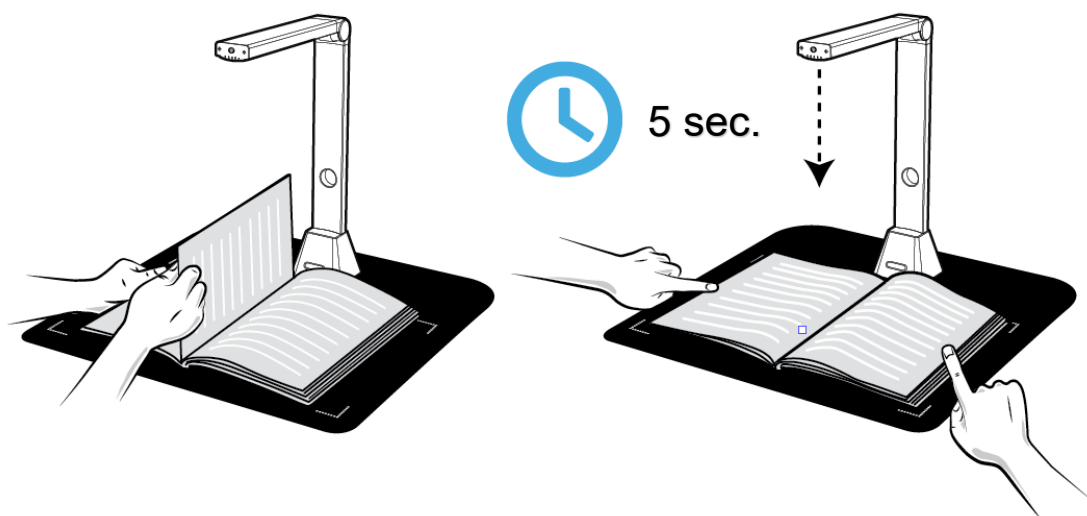
Auto Scan Function

This CamBook scanner software offers a very useful automatic scan function, when the scanner device detects a page is turned, the software will automatically start continuous scanning. To use Auto Scan function, please select the Scan Interval to “Automatic” from the top setting panel and then press “Start” button to start the auto scanning, to stop continue scanning press “Stop” button.



Scan Interval

You can also set the specified time interval as to continue scanning for extra page.



The book scanner automatically starts spinning after the specified time-period passes.

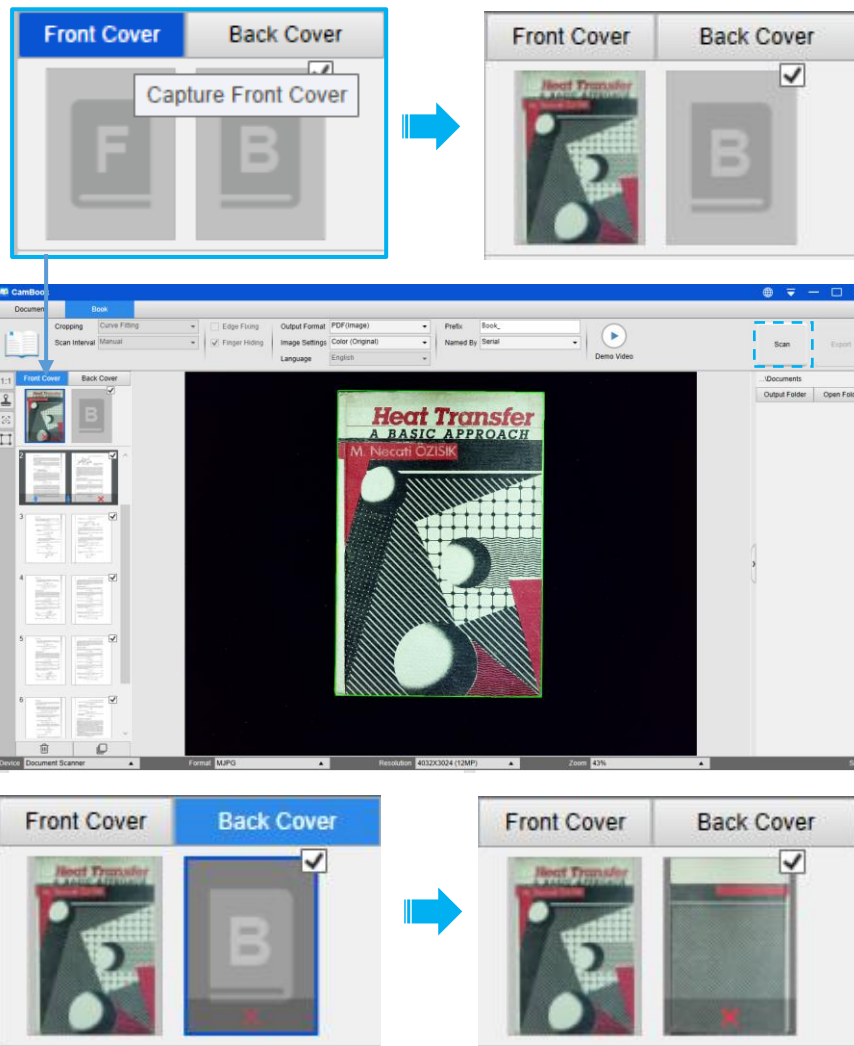
Set front and back cover images

To scan the front and back cover images of your book, you can follow below procedures:

- 1) Click on the "Front Cover" button on the left side.
- 2) Place the book front-cover (face up) on the center of the scan mat.
- 3) Set the [Image Settings] feature option to "Color (Original)" Recommend!
- 4) Press the [Scan] button to scan the front cover image.

NOTE: When entering to the cover scan mode, the software will automatic start the auto-cropping function.

- 5) After scanned the book cover thumbnail will be automatically displayed in the left side preview window as below example.
- 6) To scan the back-cover image, click on the "Back Cover" button and turn the book to the back-side (face up) on the center of the scan mat, then press the [Scan] button to scan the back-cover image.



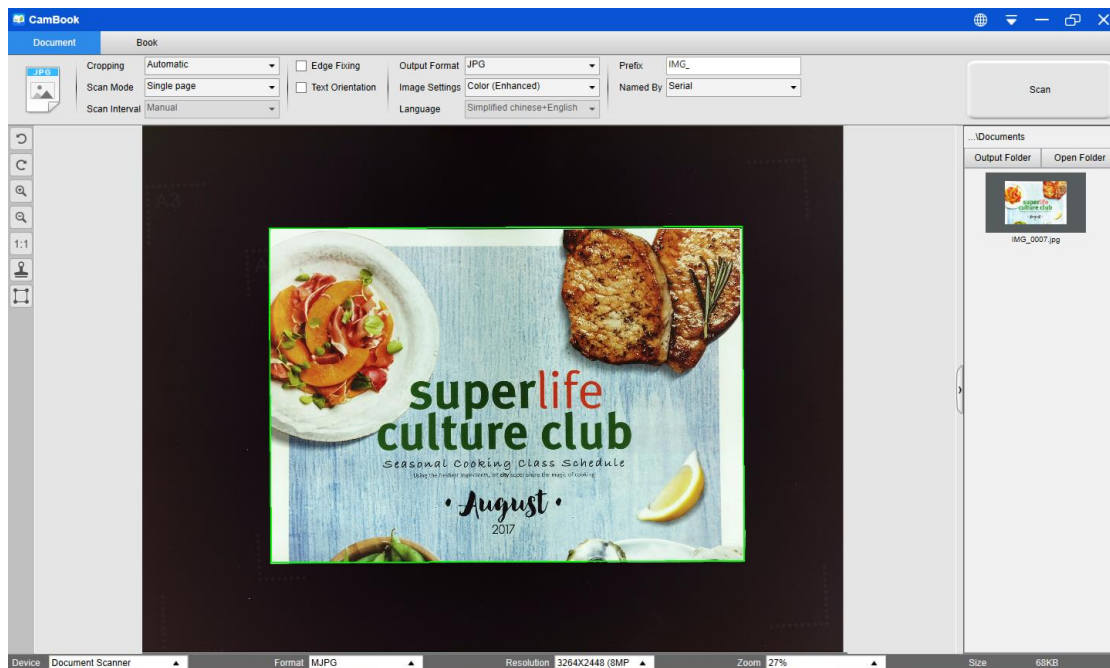
NOTE: You can click "X" icon on the thumbnail to remove the cover image and rescan a new image if necessary.

Usage Example

How to scan a nice color document?

To scan a nice document, you can follow these procedures:

- 1) Click on the [Document] function on the top menu bar.
- 2) Set the [Cropping] feature option to “Automatic”.
- 3) Set the [Scan Mode] feature option to “Single Page”, this will instruct the software to only capture one side of the object. (You can also select “Dual (Left-Right)” to scan both side of an object and merge them into one image. This is useful when you want to scan both side of an object, for example business cards, and merge them into one image file.)
- 4) Set the [Name By] feature option to “Serial” or ”Date & Time”;
- 5) Set the [Image Settings] feature option to “Color (Enhanced)”, this will instruct the software to improve the color quality of the output image;
- 6) Set the [Output Format] feature option to “JPEG”, this will instruct the software to output image file in the JPEG format.
- 7) Click on the [Scan] button on the upper right corner, then you should see a JPEG file been created in the file column on the right side.

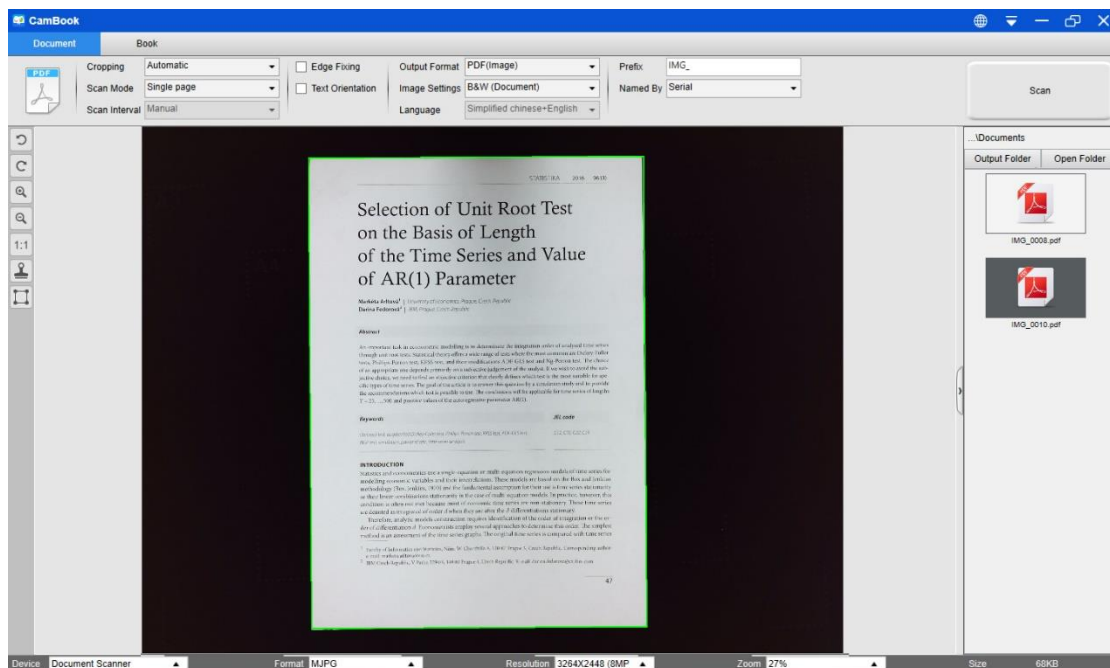


NOTE: Avoid scanning document in places near the window, because environments with strong lighting. Excessively bright ambient lighting will affect the brightness and affect scanning results.

How to scan document and save as PDF file?

To scan a single page document and save as PDF file, you can follow these procedures:

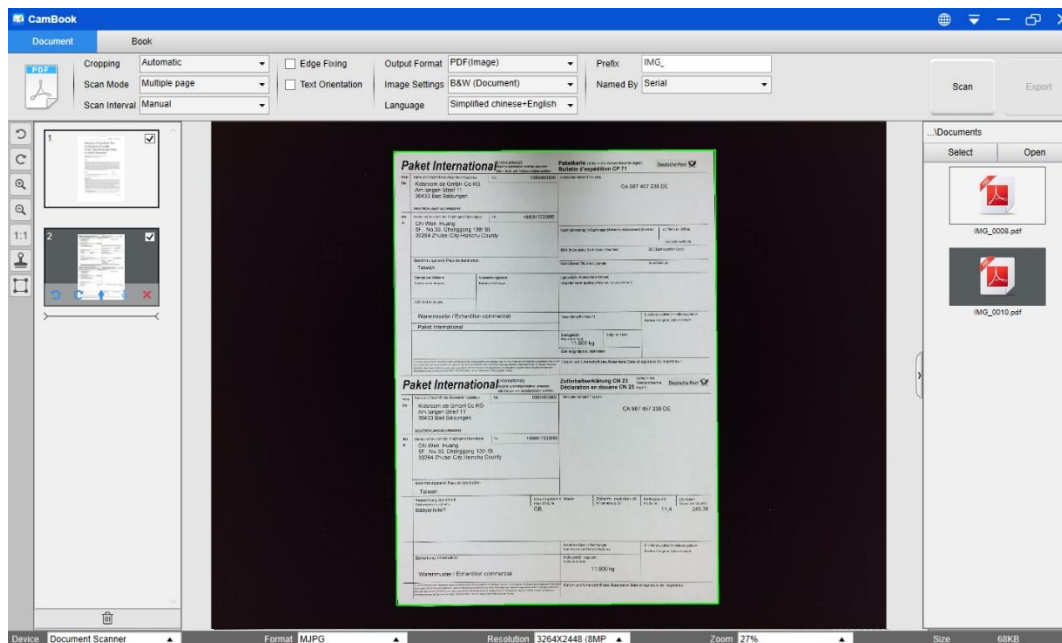
- 1) Click on the [Document] function on the top menu bar.
- 2) Set the [Cropping] feature option to “Automatic”, this will instruct the software to search for a single meaningful document in the preview window and crop out a good image. Once a meaningful object is detected, you will see a green color box drawn around the meaningful object in the preview window.
- 3) Set the [Scan Mode] feature option to “Single page”, this will instruct the software to only capture one page of the document,
- 4) Set the [Time Interval] feature option to “Manual”.
- 5) Check “Edge Fixing” and “Text Orientation” on the menu bar if necessary.
- 6) Set the [Output] feature option to “PDF (Image)”, this will instruct the software to output image file in the PDF format.
- 7) Set the [Scan Settings] feature option to “B&W (Document)”, this will instruct the software to output the image file in the B&W style and remove some undesired shadows.
- 8) Click on the [Scan] button on the upper right corner, then you should see a PDF file been created in the file column on the right side.



How to scan a multiple page document into a PDF file?

To scan a multiple page document into a PDF file, you can follow these procedures:

- 1) Click on the [Document] function on the top menu bar.
- 2) Set the [Cropping] feature option to “Automatic”
- 3) Set the [Scan Mode] feature option to “Multiple page”, this will instruct the software to capture multiple page of the document.
- 4) Set the [Time Interval] feature to “Manual”, this will instruct the software to wait for user capture command for each capture. (You can also select “Automatic” options to let the software self-detect the page flipping process, or use “Repeat (3/5 sec)” options to let the software repeatedly scan images after 3 or 5 seconds.)
- 5) Set the [Name By] feature option to “Serial” or “Date & Time”;
- 6) Set the [Image Settings] feature option to “B&W (Document)”.
- 7) Set the [Output Format] feature option to “PDF (Image)”.
- 8) Click on the [Scan] button to scan one page, then you should see a new page is been added on the left side in the preview column;
- 9) After all pages have been scanned, click on the [Export] next to [Scan] button on the upper right corner of the main window, then you should see a new PDF file been created in the file column on the right side.



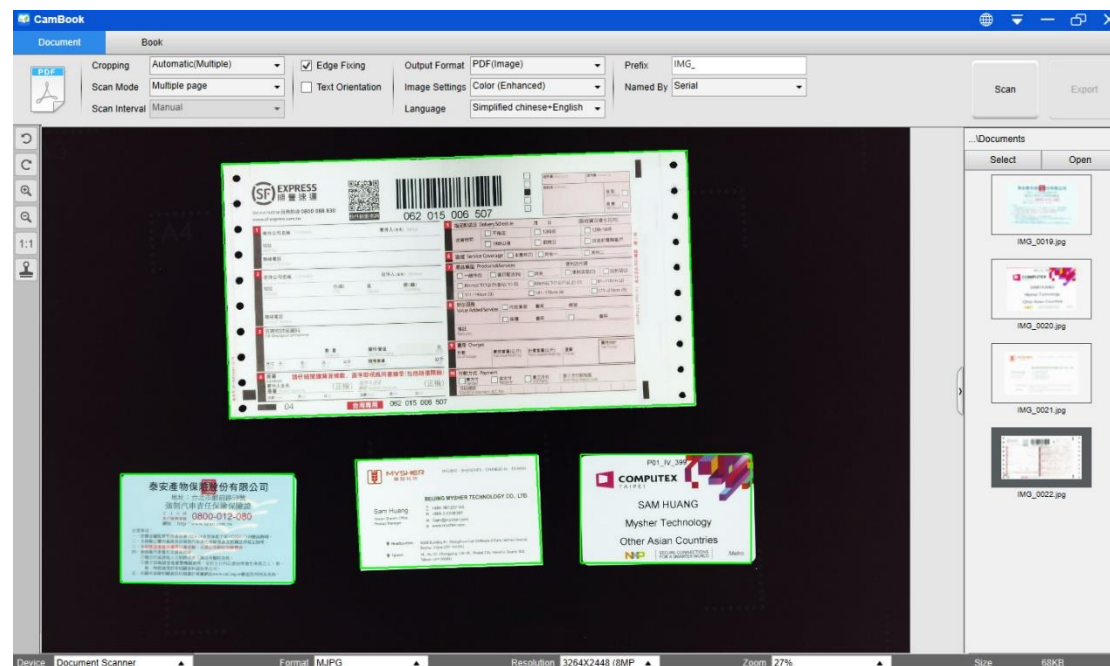
NOTE: During the image scan process, you can manipulate the temporary images on the preview column on left side, such as rotate the image, move an image up or down the list, delete the image, or insert a new image.

You can also click on the  [Clear] button to delete all images when you are done.

How to use crop feature to scan multiple images at the same time?

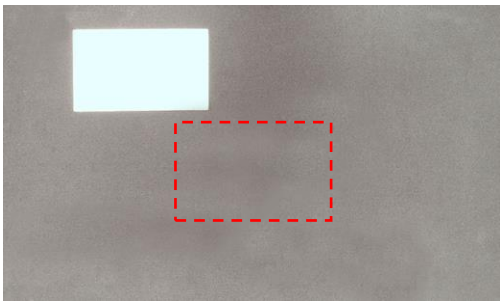

To use crop feature to scan multiple images at the same time, you can follow these procedures:

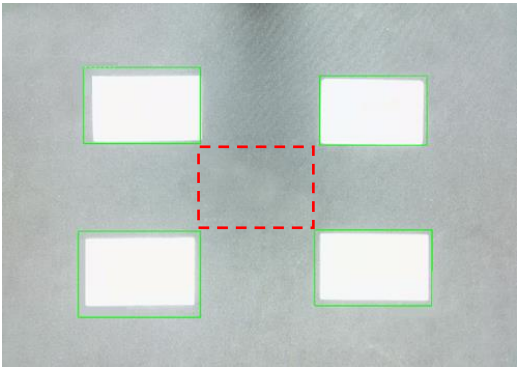

- 1) Click on the [Document] function on the top menu bar.
- 2) Set the [Cropping] feature option to “Automatic (Multiple)”, this will instruct the software to search for multiple objects in the preview window and crop out as many images as possible. A green color box will be drawn around any meaningful objects that have been found in the preview window.
- 3) Set the [Scan Mode] feature option to “Single Page”.
- 4) Set the [Time Interval] feature to “Manual”.
- 5) Set the [Output] feature option to “JPEG”.
- 6) Click on the [Scan], then you should see multiple images files been created.



How to scan a good quality image of name card?

- 1) Click on the [Document] function on the top menu bar.
- 2) Set the [Cropping] feature option to “Automatic” for scan with single card or “Automatic (Multiple)” for scan with multiple cards.
- 3) In order to get a better image quality, please place the name card in the middle of the scanning area. This will make sure the AE (Auto-Exposure) algorithm will not over-expose the photo capturing process and cause the image to be too bright.

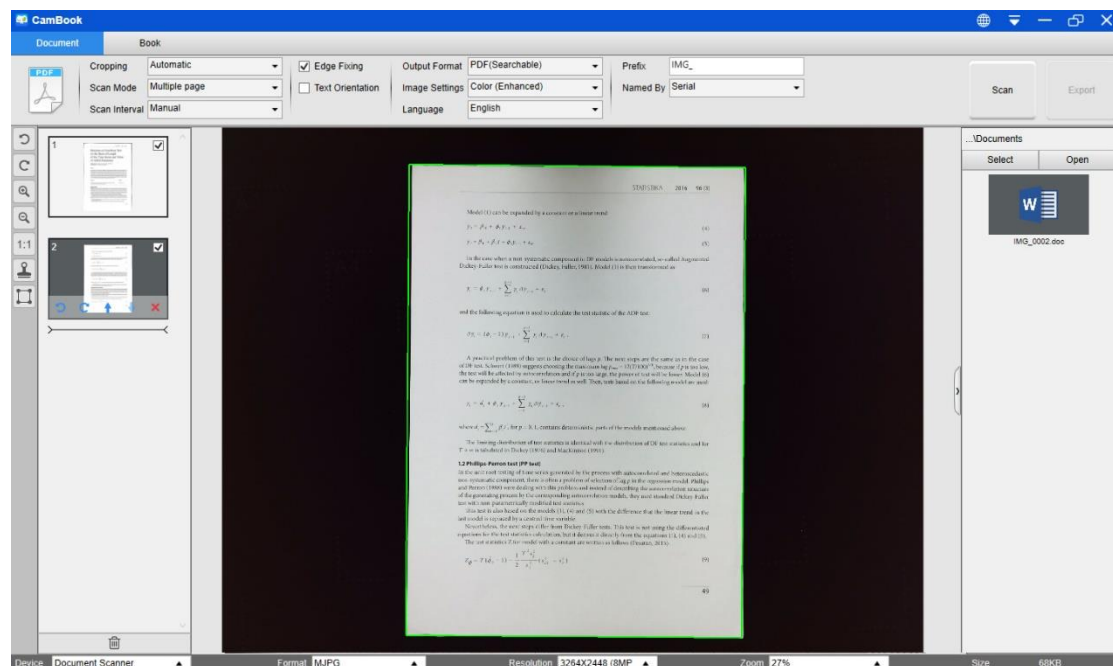
Scan single name card	
Incorrect Position	Correct Position
	
Do not place the name card without aligning to the center of scanning area.	To scan single name cards, please place the name card close to the position mark in the center of scanning area.

Scan multiple name cards	
Incorrect Position	Correct Position
	
Do not leaving a space in the center of scanning area when scan with multiple name cards like above example.	To scan multiple name cards, please place at least one name card in the center of scanning area. Otherwise the image will be over-exposed.

How scan a multiple-page document into a Word file?

To scan a multiple page document and create OCR into a Word file, you can follow these procedures:

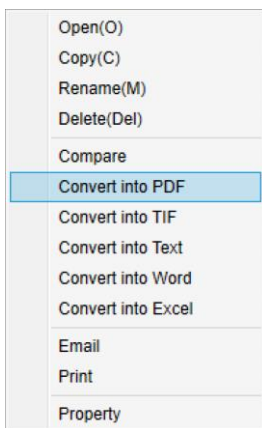
- 1) Click on the [Document] function on the top menu bar.
- 2) Set the [Cropping] feature option to “Automatic”.
- 3) Set the [Scan Mode] feature option to “Multiple page”.
- 4) Set the [Time Interval] feature option to “Manual”.
- 5) Set the [Output Format] feature option to “Word”, this will instruct the software to output scanned result in a Word file.
- 6) Based on the content of document to select recognize language from the [Language] feature option.
- 7) Set the [Name By] feature option to “Serial” or ”Date & Time”;
- 8) Click on the [Scan] button on the upper right corner to scan multiple pages.
- 9) Click on the [Export] button on the lower-left corner to export all the scanned images into a Word file.



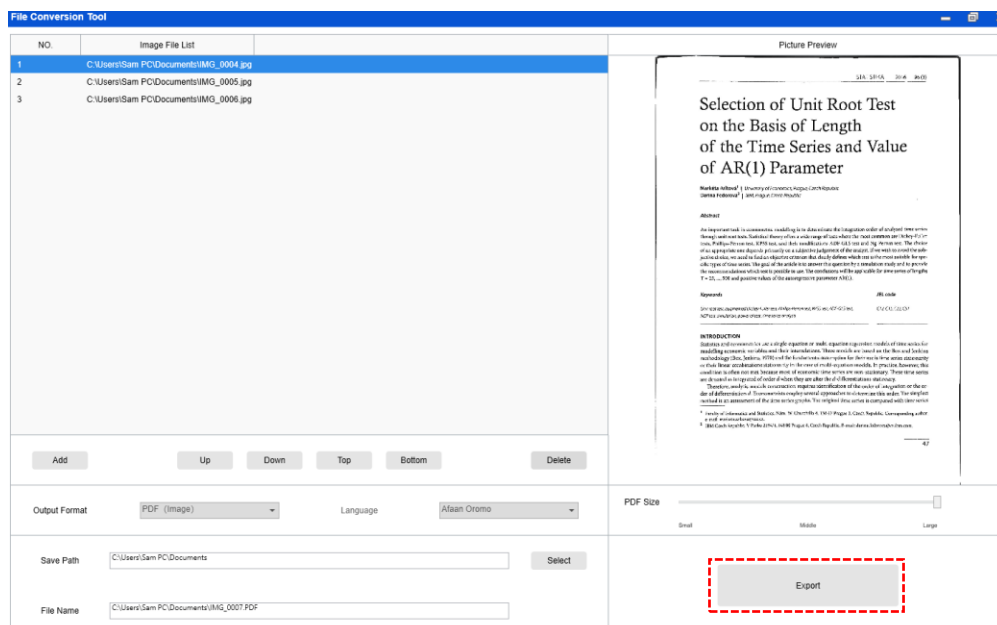
How to combine multiple images files into one PDF file?

If you have captured multiple images in your file directory, you can easily combine them into one PDF file:

- 1) In the file directory column shown on the left side of the main control window, you can push and hold the “Shift” key or the “Ctrl” key while you use your mouse to click and select multiple JPEG image files;
- 2) Right click on these selected image files, and then you should see a pop-out window with multiple options;



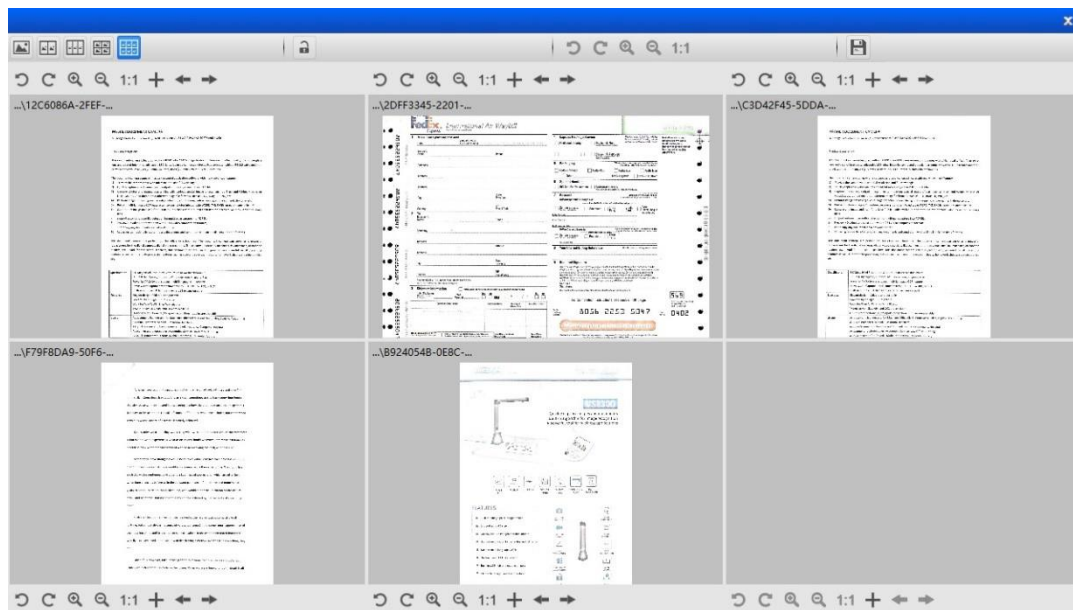
- 3) Please select [**Convert into PDF**] option, then the PDF Creating Tool window will appear.
- 4) In the PDF Creating Tool window, you can Add, Delete, Move Up, or Move Down an image, or you can adjust PDF file size, or you can also name the File Name for the targeted output PDF file;
- 5) When you are ready, please click on the [**Export**] button to create a PDF file.



How to compare multiple image files in one window?


If you have captured multiple images in your file directory, you can easily compare them side-by-side by using the Image Comparing feature:

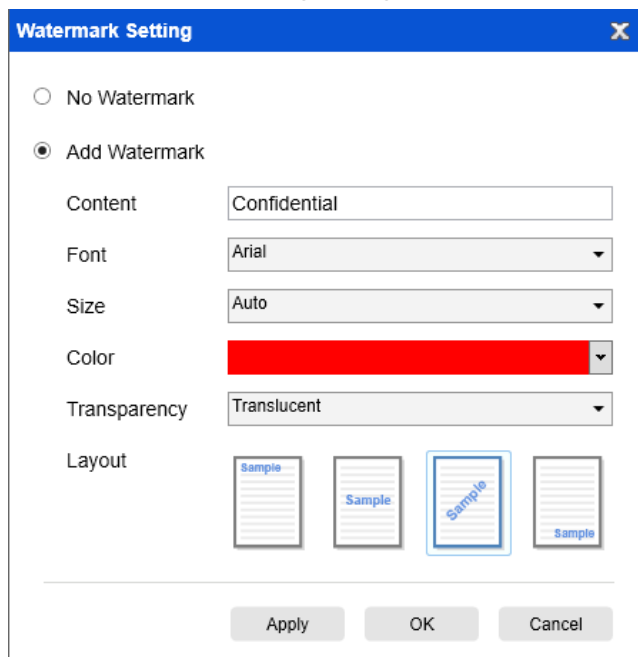
- 1) In the file directory column shown on the left side of the main control window, you can push and hold the “Shift” key or the “Ctrl” key while you use your mouse to click and select multiple JPEG image files;
- 2) Right click on these selected image files, and then you should see a pop-out window with multiple options;
- 3) Please select “Compare” option, then the Image Comparison window will appear;
- 4) You can select up to 6 images and compare in the same window.
- 5) Use “Lock/Unlock” option, you can rotate or zoom on each individual images or operate these functions on all images;



How to add a Watermark in scanned document file?

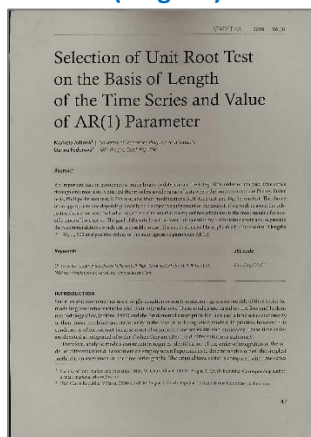
To add a common watermark such as DRAFT or CONFIDENTIAL to your scanned document, you can follow the following procedures:

- 1) Click on the [Document] function on the top menu bar.
- 2) Click on Watermark  icon from the left side toolbar to bring out the Watermark setting dialog.
- 3) In the Watermark setting dialog, select [Add Watermark].

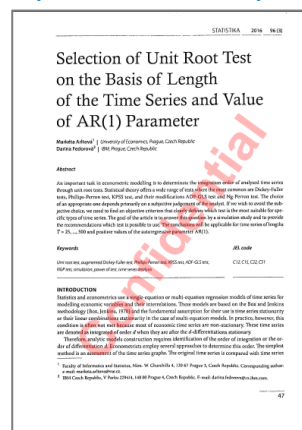


- 4) Type your watermark text in the **Content** box. You can try different fonts, size, colors, transparency, and choose a layout while you're at it.
- 5) Click [OK] to apply the Watermark settings to your document. Now you can try to scan a document with add Watermark.

(Original)




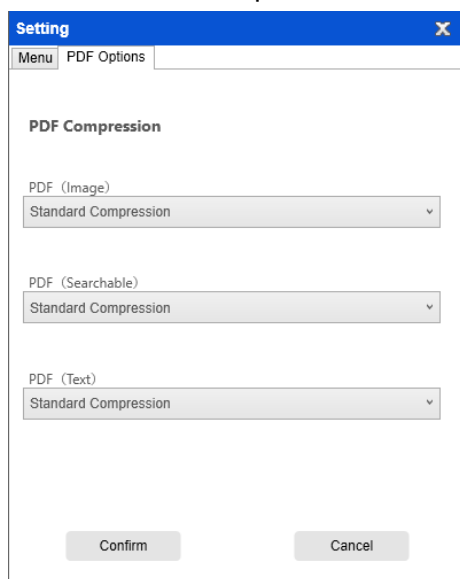
(Added Watermark)



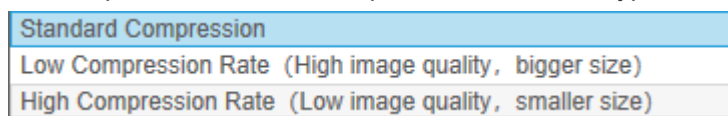
How to set the PDF Options?

The documents you process with the software can be saved as PDF in different options. The following steps are guide you how to set the detail options of PDF file.

- 1) Click on the settings  icon from the right top of the main window and select “Setting” from the drop down list.
- 2) Choose the “PDF Options” tab.



- 3) In the PDF Options dialog, you can make change as standard, low or high for the file compression from the drop down list of each type PDF format.



- 4) Click [**Confirm**] to apply the PDF settings to your document.

PDF (Image)

When you select this file type, this software doesn't execute the text recognition on your document. Your PDF file will not be text-searchable, it only contains the image of your original document.

PDF (Searchable)

This file type is most commonly used. It contains double layers: the recognized text, and the original image on top of the text. This way, you have both access to the recognized text and you still see the original image.

PDF (Text)

This file type contains the recognized text only, but does not contain the original image of your document. Any images in the original document are included as graphics in the PDF file.

Supported OCR Languages

The CamBook software integrated with a powerful OCR function, user can scan a document and convert the image into a searchable PDF, editable Word, Text, or Excel file. The OCR function supports the following languages.

English	German	French
Spanish	Italian	British English
Swedish	Danish	Norwegian
Dutch	Portuguese	Brazilian
Galician	Icelandic	Greek
Czech	Hungarian	Romanian
Slovak	Croatian	Serbian
Slovenian	Luxembourgish	Finnish
Russian	Belarusian	Ukrainian
Macedonian	Bulgarian	Estonian
Lithuanian	Afrikaans	Albanian
Catalan	Irish Gaelic	Scottish Gaelic
Basque	Breton	Corsican
Frisian	Norwegian Nynorsk	Indonesian
Malay	Swahili	Tagalog
Japanese	Korean	Simplified Chinese
Traditional Chinese	Quechua	Aymara
Faroese	Friulian	Greenlandic
Haitian Creole	Rhaeto Romance	Sardinian
Kurdish	Cebuano	Bemba
Chamorro	Fijian	Ganda
Hani	Ido	Interlingua
Kikongo	Kinyarwanda	Malagasy
Maori	Mayan	Minangkabau
Nahuatl	Nyanja	Rundi
Samoan	Sotho	Sundanese
Tahitian	Tongan	Tswana
Wolof	Xhosa	Zapotec
Javanese	Nigerian Pidgin	Occitan
Manx	Tok pisin	Bislama
Hiligaynon	Kapampangan	Balinese
Bikol	Ilocano	Madurese
Waray	Serbian latin	Latin
Latvian	Hebrew	Numeric
Esperanto	Maltese	Zulu
Afaan Oromo	Asturian	Azeri (latin)

Luba	Papiamento	Tatar (latin)
Turkmen (latin)	Welsh	Arabic
Farsi	Mexican Spanish	Bosnian (Latin)
Bosnian (Cyrillic)	Moldovan	German (Switzerland)
Tetum	Kazakh (Cyrillic)	Mongolian (Cyrillic)
Uzbek (Latin)	Simplified Chinese+English	Traditional Chinese+English
Japanese+English	Polish	Turkey

NOTE:

- 1) In order to work correctly by using built-in OCR feature, when using the OCR function, please set [Image Settings] option to “B&W (Document)” or “B&W (Red Stamp)”, this will help to speed up the OCR recognition process.

Questions and Answers (Q&A)

Q1: Why am I getting the video from the Webcam instead of the book scanner?

A1: Please select the correct camera device by clicking on the [Device] setting at the lower left corner of the main window, and then select the right book scanner device.

Q2: Why are there some noises (black dots) on my scanned document?

A2: When scanning a black and white document, please choose “B&W (Red Stamp)” option from [Image Settings] feature setting for better image quality.

Q3: Why are there shadows on my scanned document?

A3: Please choose “B&W (Red Stamp)” option from [Image Setting] feature setting and try again.

Q4: How can I merge the multiple documents into one PDF?

A4: Please choose “Multiple” option in [Page] feature setting, and please choose “PDF” option from [Output] feature setting.

Q5: Why document cannot be detected?

A5: Please make sure the document is on the black soft mat or try to restart the software again.

Q6: Why is the image appear to be over-exposed? The text can't be seen now.

A6: Please place document close to the center of scanning window.

Q7: After capture, where are images been stored?

A7: Please click “Open” button on the right side of the software main window. The default path is “My Document”, you can also set the storage path by clicking [Select] button.

